

Historic, archived document

Do not assume content reflects current scientific knowledge, policies, or practices.

CATALOGUE

№ 26.

62.17
SUMMER AND FALL

1903

**HASTINGS'
SEEDS**

H·G·HASTINGS & CO.

35 MARIETTA ST

ATLANTA - GEORGIA.

Fulton Mammoth Turnip and Surehead Cabbage

IT has been our custom for several years to give extras on seed orders. This summer and fall we are giving two of the best things we have that are reasonable—a half-ounce packet of the Fulton Mammoth Turnip, the largest, best, hardiest and most productive salad turnip ever introduced, and a packet of our Genuine Surehead Cabbage, the most popular variety for home use in the South—as a premium on every seed order sent us between July 1st and December 1st, 1903. We are giving these varieties free to our customers because they are the most useful to the great majority. Salad turnips and cabbage are stand-bys in almost every Southern home garden, and we are simply giving you the best variety we have in each.

We believe in gardening, not only because we sell seed, but because gardening is profitable. Good gardens everywhere are a big help in farm prosperity and in reducing the expenses of the family. We try to encourage gardening—first, by impressing upon you its advantages; second, by furnishing seeds that you can get the right kind of results from when you do garden.

There are hundreds of thousands of seed buyers in the Southern States who have never used **HASTINGS' SEEDS** and don't know how good they are. Probably a great many of them have been caught by glaring advertisements of impossible vegetable, flower or field seeds, and have been either disappointed or cheated, and came to the conclusion that all seedsmen are liars and swindlers. Now, this is not true. There are a few who are a disgrace to the trade. You cannot condemn them any more strongly than we do. What we have to do is to convince you that when you buy of **H. G. HASTINGS & CO.** you get value for every cent spent with us. This is easy for us to do if we can get you to send your first order to us. There is the point. Now, we want that first order from you this summer or fall. There is not a garden in the whole South that don't have some seed planted in it between July and December, and the seed has to be bought, either of a seedsman or a merchant. We want to get you started with us, if you are not already one of our customers. To get your order is one reason why we are giving a half-ounce packet of that splendid salad turnip, the Fulton Mammoth, and a packet of our popular Surehead Cabbage

Free to Every Seed Buyer

who orders from this catalogue before December 1st. Naturally we want large orders, but if you can not or do not want to give us a large order, send along a small one, even if it isn't more than ten cents. What we are after is an order, not only from our regular customers, but from everyone to whom this catalogue goes. Those who have bought from us before know the quality of our seeds. We don't have to talk to them about it. At the same time our free offer is open to them just as much as to those who are not already buyers. If we can get you to send us an order, be it large or small, it will show you: First—That it is perfectly safe to buy through the mail. Second—That you can get greater value for your money than you can get from your merchant or from other seedsmen. Third—It will show you the superiority of **HASTINGS' SEEDS** over those that you have heretofore planted.

We know that when we have your first order, the quantity and quality of the seeds which you receive will convince you that it is to your interest to continue to buy of us. Our greatest trouble is to get you to send us the first order; and the reason we make such offers of free seeds is to get you to send that first order. It costs us money to send these seeds to you free. We are willing to lose a little to get you to send in that first order. If we can get that first order, we may expect to get a great many more from you in the future, and that is what we are working for—to get a large list of permanent customers, who will buy from us every year. The great thing is to get you started with us and that is why we offer these extra inducements to get you to place your first order with us.

Summer and Fall Gardening. Too little attention is paid to summer and fall gardening. Gardening at this time should not be neglected, for some of the best paying crops of the year are made by summer and fall planting. Keep your ground at work the year round and it will keep you.

H. G. HASTINGS & CO.

35 MARIETTA ST.

ATLANTA, GEORGIA

HASTINGS' B



HASTINGS IMPROVED

AMERICAN RUTABAGA.



Early Purple

Hastings'

Rutabagas are the best and heaviest has been grown and most critical gardeners yellow flesh of very exceptionally free fine top, small and fine rutabagas for late winter excellent variety. Our "Improved American" variety, postpaid.

Early

An old standby for either fall or spring flat, as shown in the skin pure white; fine pound, 45 cents, postpaid.

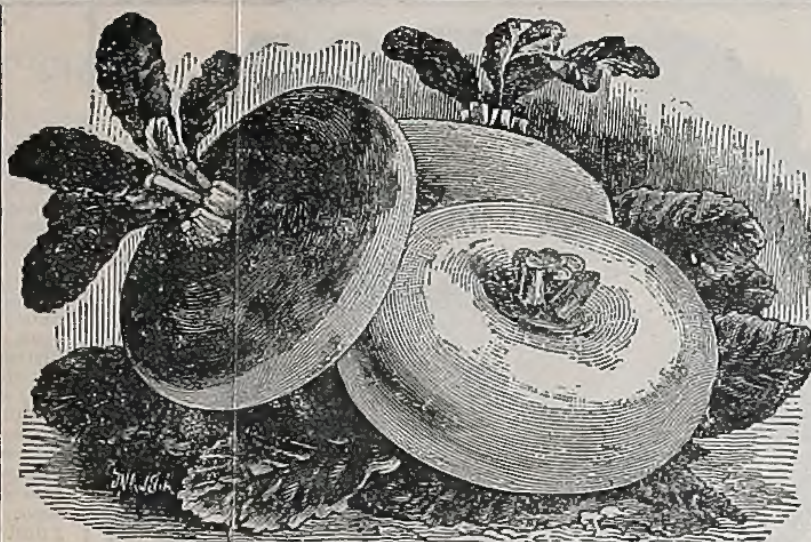
SUCCESSFUL

REMEMBER

7 Ounces - 7



HASTINGS' BIG 7 TURNIP COLLECTION



Early Purple or Red Top Strap Leaf—Early White Flat Dutch.

Hastings' Improved American Rutabaga

Rutabagas are the first things to be planted during the summer months. We make a specialty of high grade rutabaga seed. Our special strain of Improved American leaves nothing to be desired. Our Improved American is the best and heaviest cropper of all rutabagas for the South. This variety has been grown and improved for years to meet the wants and trade of the most critical gardeners. It is of fine form, with a rich purple colored top and yellow flesh of very pleasing appearance. Flesh is tender and sweet and exceptionally free from stringy, hard flesh. It has a comparatively small top, small and fine roots, and is a sure and heavy cropper. Those who grow rutabagas for late winter markets and stock feeding will find this a most excellent variety. If you grow rutabagas you cannot afford to be without our "Improved American." Ounce, 5 cents; $\frac{1}{4}$ pound, 15 cents; pound, 50 cents, postpaid.

Early White Flat Dutch

An old standby and one of the most popular early varieties in the South for either fall or spring plantings. Of medium size and a quick grower. Is flat, as shown in the illustration, with very small fine tap root. Flesh and skin pure white; fine grained and sweet. Ounce, 5 cents; $\frac{1}{4}$ pound, 15 cents; pound, 45 cents, postpaid.

SUCCESSFUL SEEDS FOR SOUTHERN SOWERS

REMEMBER Our Prices Include Postage Paid

OUR BIG 7 COLLECTION

Ought to be in every home garden in the South. It's a bargain in price and it's something that everyone wants to plant in the summer and fall. It gives you 7 ounces of turnip seed of the highest grade, of 7 of the best varieties of turnips; early, medium and late, giving a continuous supply through fall, winter and spring. No such offer has ever been made by any seedsman and you ought to take advantage of it. Remember, you get one ounce each of our Improved American Rutabaga, Purple or Red Top Globe, Early White Flat Dutch, Red or Purple Top Strap Leaf, Extra Early White Egg, Yellow or Amber Globe, and Seven Top, delivered at your postoffice for 25 cents. Seven varieties, all different, just what you need, at the lowest possible price they can be sold for.



Purple or Red Top Globe.

FOR WINTER AND SPRING "GREENS"



Seven Top Turnip.

Purple or Red Top Globe

The most popular variety in the South for general planting. It is medium early, globe-shaped, very handsome in appearance and an extra heavy cropper in all parts of the South. You cannot plant too many of them either for home use or market. It's always of good quality, a good keeper and a good seller in the market. Ounce, 5 cents; $\frac{1}{4}$ pound, 15 cents; pound 45 cents, postpaid.

Extra Early White Egg

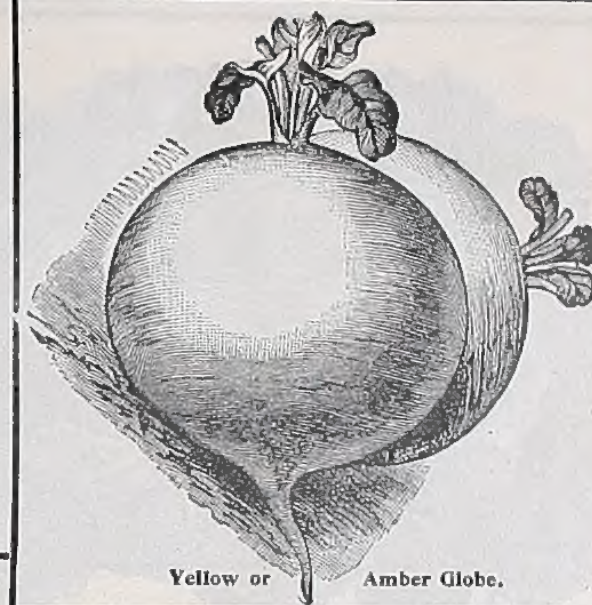
The finest flavored of all early turnips and with favorable seasons is ready for table use in six weeks from sowing. Skin and flesh are a pure snow white, solid, fine grained, sweet and a good keeper. Looks very attractive bunched for sale and gardeners with this variety have no difficulty in selling at top prices. Ounce, 5 cents; $\frac{1}{4}$ pound, 15 cents; pound, 50 cents.

Early Red or Purple Top

This is another popular variety of early flat turnip, being almost identical with the Flat Dutch except for the deep red or purple color of the skin at the top of the bulb. Known in many sections as the Purple Top Flat Dutch. It's a quick grower with very fine-grained, sweet flavored flesh. The red top of the bulb extending down to where it rests in the soil, adds very much to the attractive appearance of this popular variety. Ounce, 5 cents; $\frac{1}{4}$ pound, 15 cents; pound 45 cents.

Yellow or Amber Globe

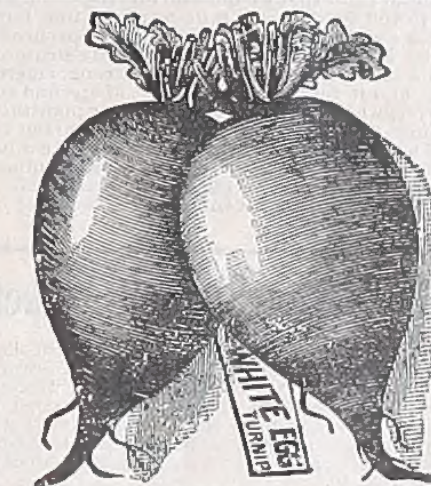
Sometimes called Yellow Stone. Undoubtedly the most handsome of the yellow sorts. Grows to a large size, flesh very firm, fine grained and keeps splendidly well into spring. Succeeds well when planted South in the fall. Ounce, 5 cents; $\frac{1}{4}$ pound, 15 cents; pound, 45 cents.



Yellow or Amber Globe.

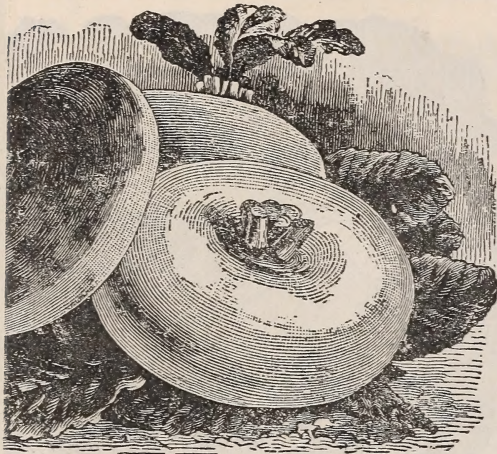
Seven Top "Salad Turnip"

The most popular variety for winter and early spring "greens" in the South. Very hardy, growing all through the winter. Can be cut at all times, giving a supply of fresh vegetable matter at times when nothing else is available. Can be sown from August 'till December and in early spring. Ounce, 5 cents; $\frac{1}{4}$ pound, 15 cents; pound, 40 cents.



7 Ounces - 7 Varieties - Postpaid 25 Cents

BIG 7 TURNIP C



or Red Top Strap Leaf—Early White Flat Dutch.

Improved American Rutabaga

the first things to be planted during the summer months. of high grade rutabaga seed. Our special strain of Im-
 ayves nothing to be desired. Our Improved American is
 improved for years to meet the wants and trade of the
 South. It is of fine form, with a rich purple colored top and
 pleasing appearance. Flesh is tender and sweet and
 firm, with a comparatively small
 tap root, and is a sure and heavy cropper. Those who grow
 in the markets and stock feeding will find this a most
 valuable variety. If you grow rutabagas you cannot afford to be without
 this variety. Ounce, 5 cents; ¼ pound, 15 cents; pound, 50

White Flat Dutch

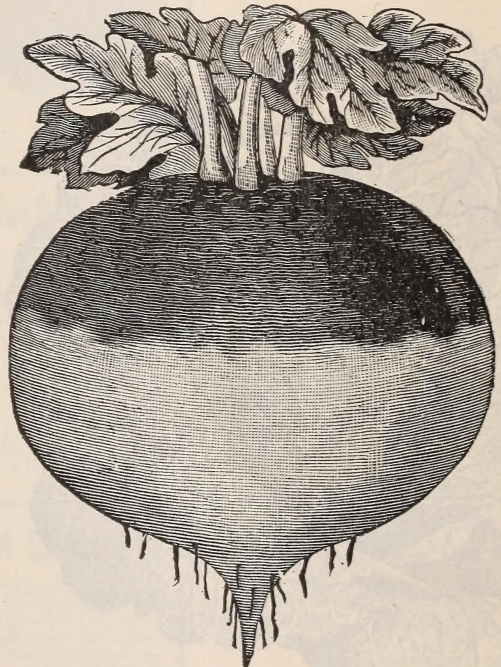
and one of the most popular early varieties in the South
 for plantings. Of medium size and a quick grower. See
 illustration, with very small fine tap root. Flesh and
 is grained and sweet. Ounce, 5 cents; ¼ pound, 15 cents;
 pound, 50 cents.

SEEDS FOR SOUTHERN SOWERS

Our Prices Include Postage Paid

OUR BIG 7 COLLECTION

Ought to be in every home garden in the South. It's a bargain
 in price and it's something that everyone wants to plant in the
 summer and fall. It gives you 7 ounces of turnip seed of the
 highest grade, of 7 of the best varieties of turnips; early,
 medium and late, giving a continuous supply through fall,
 winter and spring. No such offer has ever been made by any
 seedsman and you ought to take advantage of it. Remember,
 you get one ounce each of our Improved American Rutabaga,
 Purple or Red Top Globe, Early White Flat Dutch, Red or Pur-
 ple Top Strap Leaf, Extra Early White Egg, Yellow or Amber
 Globe, and Seven Top, delivered at your postoffice for 25 cents.
 Seven varieties, all different, just what you need, at the lowest
 possible price they can be sold for.



Purple or Red Top Globe.

Varieties - Postp

HASTINGS' SUCCESSFUL SEEDS

—FOR—

Summer and Fall Plantings

In the South Atlantic and Gulf States.

RIGHT VARIETIES. RIGHT QUALITY. RIGHT PRICES.

SEEDS POSTPAID BY MAIL. Remember that the prices given in this list include the delivery of all seeds by the packet, ounce, quarter-pound, pound, pint or quart, except where noted. Send us the amount named in this catalogue, and we guarantee safe delivery by mail in these quantities.

LIBERAL PREMIUMS. Please bear in mind that on seeds in packets and ounces only, except Cauliflower in ounces (no quarter-pounds, pounds, pints or quarts), the purchaser may select 25 cents worth extra on each dollar sent. This does not apply to orders for collections, prices of which are net.

COST OF SENDING MONEY. In all cases where the order for seeds amounts to one dollar or more, the cost of postoffice or express money order or cost of registering the letters from places that are not money order offices, may be deducted from the amount.

STAMPS. On orders for seeds where the amount is less than 50 cents, we will accept postage stamps in good condition (one cent and two cent stamps preferred) the same as cash, but we would ask those remitting stamps to wrap them in oiled paper, if possible, to prevent them sticking together or to the order.

SPECIAL EXPRESS RATES. We have obtained from the Southern Express Co. a special express rate on seeds shipped from us to our customers. The special rate is equivalent to a reduction of about one-third from the regular rates, and on shipments of less than 30 pounds we can, in most cases, ship by express cheaper than by freight. As a rule, we can ship 15 pounds of seed or a peck of peas, or beans, or corn to any point reached by the Southern Express Co. for 35 cents. This does not apply to points on the Wells-Fargo, American or Pacific Express. The cost in those cases will be 35 cents for each company on a 10 or 15 pound shipment, making a charge of 70 cents for a point when shipment is handled by two different express companies.

(While we exercise the greatest care to have all seeds pure and reliable, we give no warranty, express or implied, and we will not be in any way responsible for the crop. If the purchaser does not accept the goods on these terms, they are to be returned at once, and any money that has been paid for them will be refunded. Every order received for articles in this catalogue will be filled on these conditions only.)

H. G. HASTINGS & CO.

Palmetto Asparagus Seed.

The Palmetto, while an old variety, is beyond question the best variety for the South. Seed can be sown in either fall or spring, thinly in drills one foot apart. When up well, cultivate frequently and continue until the roots have grown for one year. In transplanting, put the roots 18 inches apart each way and 4 inches below the surface. Use your richest piece of ground and remember that you cannot use too much manure on them. Palmetto is earlier, a better yielder, and more even and regular in growth than many of the later introductions. Packet, 5 cents; ounce, 10 cents; $\frac{1}{4}$ pound, 20 cents; pound, 60 cents.

Palmetto Asparagus Roots.

You save from 1 $\frac{1}{2}$ to 2 years' time in getting your Asparagus bed in condition to cut by the use of our splendid large 2-year-old Palmetto Asparagus Roots. Plant them this spring and cut good Asparagus next spring. While this is a little more expensive than planting the seed, yet the time saved and the generally more satisfactory growth makes it well worth while to use the roots. 50 roots, 85 cents; \$1.50 per 100; postpaid. By express or freight, not prepaid, per 100, 75 cents; per 1,000, \$6; per 10,000, \$50.

French Globe Artichoke.

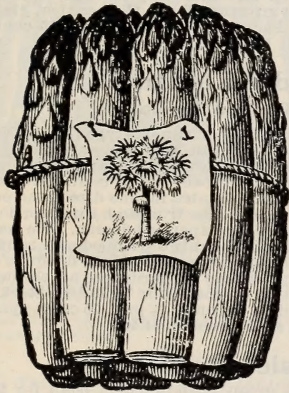
A vegetable little known or liked by Americans, but highly prized by the French and Italians. This variety is for table use only. Best imported French seed. Packet, 10 cents; ounce, 30 cents; $\frac{1}{4}$ pound, \$1.00; pound, \$3.50.

Jerusalem Artichoke—The Great Hog Food.

The Southern farmer who grows hogs and does not grow artichokes is neglecting a most important hog-feeding crop. It is a most valuable food for hogs, fattening them quickly, and it is said by many hog raisers that a hog fed on artichokes has never been known to have cholera. They are fully adapted to Southern plantings, growing and increasing through the entire season. They are grown from tubers, the same as with Irish potatoes. It requires 6 bushels to plant an acre. On very rich land they have produced 1,000 bushels per acre. Turn the hogs into the field and they will harvest them. It has usually been customary to plant them during the spring months, but we believe that late fall and winter planting, especially in the lower South, is advisable, and that better results can be obtained. The tubers are hardy, staying in the ground all winter without damage from freezing, and they stand shipment better during winter than in the spring. We can supply artichokes after November 15th, and can book your order at any time before that date. If you order artichokes earlier than that, do not expect shipment earlier than November 15th. Kindly remember that we can not ship before the crop is harvested. Pound, postpaid, 25 cents; 3 pounds, 65 cents. By freight or express, not prepaid, 50 cents peck; \$1.75 per bushel; barrel, \$4.50.



Jerusalem Artichoke.



Palmetto Asparagus.

HASTINGS' BIG 4 CABBAGE COLLECTION



Hastings' Surehead Cabbage.

Hastings' Surehead Cabbage

We have sold a great many thousand pounds of seed of our Genuine Surehead Cabbage during the past 8 years, and it is today the most popular cabbage for main crop that we have on our list. Our special strain of Surehead (Premier Brand Seed) never fails to make fine, large solid heads with few outer leaves, as shown in our illustration. Surehead is the result of a cross between the Early Flat Dutch and a hardy Drumhead variety, and has the good points of both combined. It's a strong, vigorous grower, maturing for main crop, and is very uniform in size, shape and color. It's good for spring planting everywhere, and better for summer planting in the Central South and fall planting in the Lower South, for maturing in fall and winter. It's hardy and a good keeper and a good shipper. Invaluable for the home garden and one of the best for market. No Southern summer and fall garden should be without some of our Surehead Cabbage in it. **Premier Brand Seed.** Packet, 5 cents; 1/2 ounce, 15 cents; ounce, 25 cents; 1/4 pound, 60 cents; pound, \$2.00.

Hastings' Long Island Wakefield Cabbage

The largest, earliest, surest header of any of the large Wakefield strains. Earlier, larger and finer bred than any of the strains of Charleston Wakefield. One and a half to two pounds heavier, firmer, better shape and more solid than the Early Jersey Wakefield. In good soil and with favorable weather conditions it is often ready for use in 50 days from transplanting. It is a gem for those desiring a first-class pointed cabbage. **Premier Brand Seed.** Packet, 10 cents; 1/2 ounce, 15 cents; ounce, 25 cents; 1/4 pound, 75 cents; pound, \$2.50.

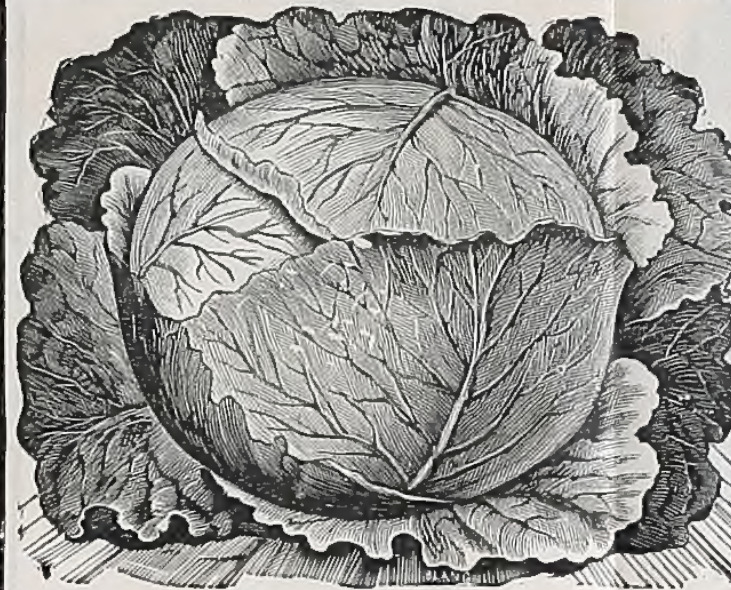
WHAT IS HASTINGS' BIG 4?

It's the biggest bargain in cabbage seed ever offered by anyone. It's just what is needed in every garden in the South for both summer and spring planting, and is planted by most of our regular customers every year. We send out tens of thousands of these collections annually and the demand constantly increases. It's popular with all planters who have used it for several seasons. It gives a succession crop of cabbage in every garden, no two of the varieties maturing at the same time. It gives every market gardener a chance to test four superb market varieties at a small cost. The 25 cents spent for this Big 4 Collection gives the buyer greater returns for the money spent, in the way of a cabbage crop, than he can get from any other seed house in the country. Every seed that goes into these collections is from our "Premier Brand" stock, the finest in the world.

Our Big 4 Collection consists of one large packet each of our prize cabbages for the South. **Sure Crop, Long Island Wakefield, Florida Drumhead, and Centennial Flat Dutch.** This has for years been known as our Big 4 Collection. It's popular from the Atlantic Ocean on the east to Arizona on the west, from Kentucky on the north to Cuba on the south. We are going to make it more popular this season by giving absolutely free with every Big 4 Collection ordered a large packet of the always popular **Genuine Surehead Cabbage.** By ordering our "Big 4" now you get the very best there is to be had in cabbage, almost at half price. At full catalogue prices these 5 packets would cost you 45 cents. In this collection you get them for 25 cents. You get more returns from your money in this collection than anything you can get from any seed house.



Hastings' Long Island Wakefield Cabbage.



Hastings' Sure Crop Cabbage.

SURE CROP CABBAGE

This is the earliest of all the large round flat varieties. We have sold it for more than a dozen years in every State in the South. It is adapted for both fall and spring planting; for shipment, nearby markets and home use. On good soil and with proper cultivation it makes heads weighing from 8 to 12 pounds, very firm and solid, uniform in shape and size, well flattened on top. Quality is excellent, being crisp and tender, and when rightly cared for scarcely a plant will fail to form a good marketable head. Color a dark green, holding up well after being cut. It is a first-class variety for July and August planting in Georgia, Alabama, Mississippi and Louisiana for maturing in late fall and early winter, as well as for August, September and October planting in Florida and Texas.

Premier Brand Seed. Large packet, 10 cents; 1/2 ounce, 15 cents; ounce, 25 cents; 1/4 pound, 75 cents; pound, \$2.50.

CENTENNIAL LATE FLAT DUTCH

Our best variety of Large, Late, Flat Dutch Cabbage. It is a good, reliable header, admirably adapted to all parts of the South. It is large and solid, weighing 10 to 20 pounds, according to soil and cultivation. It is a good variety for spring planting anywhere in the South, to mature after early varieties have gone. It is very resistant to cold as well as heat, and will be found especially valuable to those desiring to plant in summer and fall for maturity in winter. There is no variety equals it in ability to stand severe frosts and freezes. This does not, however, detract from its value for spring planting, as it withstands heat well. **Premier Brand Seed.** Large packet, 10 cents; 1/2 ounce, 15 cents; ounce, 25 cents; 1/4 pound, 65 cents; pound \$2.00.

HASTINGS' FLORIDA DRUMHEAD

Another favorite with our gardeners. For ten years it has proved superior to all other Drumhead varieties. It is the earliest Drumhead Cabbage and no other compares with it in ability to resist both heat and cold. No one who wants especially fine flavor in cabbage can afford to be without it, and its popularity as a cabbage for summer and fall planting grows each year. A short stemmed, medium early cabbage which grows very compactly, the leaves turning in closely to make the head and can be planted more closely than most Drumhead varieties. Large, very solid, round and flattened on top, weighing from 10 to 25 pounds on good soil. **Premier Brand Seed.** Packet 10 cents; 1/2 ounce, 15 cents; ounce, 25 cents; 1/4 pound, 65 cents; pound, \$2.00; postpaid.



Florida Drumhead Cabbage.

BEST IN 35 YEARS I have been growing cabbage for nearly 35 years, and have never made finer cabbage than crops grown from your "Premier Brand" seed. I do not know of any way of improving your cabbage seed. They are not only cheaper, but I find them better.
W. R. JOHNSON, Haines City, Fla.



Centennial Late Flat Dutch.

And a Packet of Surehead 25 Cents, Postpaid

Beans For Late Plantings.

Bush Beans can be planted in this latitude as late as September 1st and later the further South you live. Almost all varieties in this list planted at this time of year will mature in six or seven weeks from planting. You can easily keep up a supply of beans on your table until frost. It is one of the easiest crops grown, a staple for table use and always good in nearby markets and a profitable shipping crop at the right season. Beans are one of the best garden vegetables. Keep a supply growing all through the season.

Culture In this latitude (Atlanta) bush beans can be planted all through the summer and up to September 1st. In Florida, Texas and along the Gulf Coast, plantings for fall use should begin about August 1st and continue until October, for the fall and early winter crops. Soil should be warm and moist for successful germination. Sow in drills 18 inches to 2 feet apart, dropping a bean every 3 or 4 inches; cover 2 inches. When ready to bloom draw the earth up around the stem.

Stringless Green Pod.

An absolutely stringless, green, round-podded bean, stringless when half grown, stringless when full size, stringless when the pods begin to dry. Three years ago we told our market garden friends around Atlanta that we had a bean that was better than the Valentine, heretofore the standard market variety. They laughed at us then, now they all buy the Stringless. It surpasses all other beans in crisp, tender qualities and fine flavor. It makes a beautiful appearance with its long, smooth, green pods, the natural size of which is shown in our illustration. It is immensely prolific, a strong, vigorous grower, coming into bearing 9 or 10 days before the earliest strains of the Valentine and continuing to produce long after other varieties have gone, the pods retaining their superb eating and stringless qualities to the last. It is of immense value, not only to the market gardener who desires the most profitable crop, but also to those with the family garden who desire to combine the finest quality with the heaviest production. The tests of it for the past three years in both the home and market gardens around Atlanta have shown its great superiority in every respect to the Valentine, which has heretofore been the standard. We recommend it fully to everyone who grows beans in the Southern States. We find that there are several strains of the Stringless on the market, most of them inferior. Our stock has been very carefully selected and grown, and will give you the strongest growing plants, the heaviest yields and the largest and finest pods of any. Packet, 10 cents; $\frac{1}{2}$ pint, 15 cents; pint, 25 cents; quart, 40 cents; peck, \$1.40; bushel, \$5.

Extra Early Red Valentine. Our True Round-Podded Stock.

For the past three years immense quantities of run-out types of the Valentine have been unloaded on planters in the South, and there are plenty of them still being offered. Some of the stock put out by what are considered the most reliable houses in the North turned out over 80 per cent. flat pods, uneatable and unsalable. Every quart of them planted means direct and certain loss. The difference in the appearance of the true and this spurious stock is so slight that it can only be detected by expert seedsmen. We have no Valentine beans that are not true stock, thoroughly developed and round-podded. The pods are of fine quality, thick and meaty. Very uniform in ripening and considered one of the most profitable for gardeners all through the South. For purity and high germinating qualities our Valentine stock is excelled by none and equalled by few. Packet, 10 cents; $\frac{1}{2}$ pint, 15 cents; pint, 25 cents; quart, 40 cents, postpaid. Peck, \$1.25; bushel, \$4.50.

Hastings' Excelsior Refugee.

Next to the Stringless, this is the best green round-podded bean for the South. Why it has never superseded the Valentine we are at a loss to understand, for it is certainly a much better bean. It's a vigorous grower and a prolific bearer, tender and of the finest quality. Pods are well rounded out and make a fine appearance in market. In shipping they stand up better and arrive in Northern markets with a fresh look that makes them a quick seller. It will be found especially desirable in very wet or very dry seasons, this variety withstanding adverse conditions of weather with but slight damage. We recommend it fully. It comes in about the same time as Valentine. Packet, 10 cents; $\frac{1}{2}$ pint, 15 cents; pint, 25 cents; quart, 40 cents, postpaid. Peck, \$1.40; bushel, \$5.00.

Improved Round-Pod Refugee.

Often sold under name of Brown Valentine in some sections. While not as early by 10 days to 2 weeks as Excelsior Refugee and Valentine, its heavy cropping qualities and resistance to drouth make it a favorite for late summer and fall planting. Pods good size, meaty and tender, holding up well in shipping long distances. It continues in bearing several weeks longer than the early strains. Packet, 10 cents; $\frac{1}{2}$ pint, 15 cents; pint, 25 cents; quart, 40 cents, postpaid. Peck, \$1.25; bushel, \$4.25.



Stringless Green Pod Bush Bean.
Natural size of Pod.

Read the Southern Ruralist.

Currie's Rust-Proof Wax.

This is a market gardener's favorite, and especially adapted to long distance shipments. It is one of the earliest of the wax varieties. Vines strong and robust and growing very upright, holding the pods well up off the ground. Pods long and almost straight, rather flat and of a beautiful golden yellow color and of fairly good quality. It is rapidly growing in favor with the truckers of Florida for shipment to the North. Packet, 10 cents; $\frac{1}{2}$ pint, 15 cents; pint, 25 cents; quart, 40 cents, postpaid. Peck, \$1.25; bushel, \$4.50.

Our Big Packets.

The planter of the home garden is interested in the size of the packets. Our big packets of beans and peas (10 cts.) contain nearly $\frac{1}{2}$ bushel each; same priced packets from all the principal seed houses contain only 2 ozs.



Currie's Rust-Proof Wax Bean.

Grennell's Rust-Proof Wax.

Next to Wardwell's Kidney Wax and Valentine, we consider Grennell's the best wax bean, especially for home use. It's the best form of the Golden Wax varieties on the market and "Rust Proof" to a remarkable degree. The many thousands of our customers who have used it in past years have been well pleased with it. Pods are long, almost straight, much fleshier and far superior to the popular Improved Golden Wax, which we have dropped from our list because the Grennell strain is so much better. Packet, 10 cents; $\frac{1}{2}$ pint, 15 cents; pint, 25 cents; quart, 40 cents, postpaid. Peck, \$1.25; bushel, \$4.50.

Refugee Wax.

A splendid but little known variety that should be in thousands of Southern gardens. It is a perfect Refugee with long, round, very tender, golden yellow, stringless pods of the finest eating quality. Plants are strong, vigorous growers and heavy bearers. It is immensely valuable in dry seasons, as it seems to resist drouth better than the other varieties. Suitable for sowing either in spring, summer or fall. Packet, 10 cents; $\frac{1}{2}$ pint, 15 cents; pint, 25 cents; quart, 40 cents, postpaid. Peck, \$1.40; bushel, \$5.

Brussels Sprouts.

Brussels Sprouts are highly esteemed. The "sprouts" resemble miniature cabbages growing closely on the stalk of the plant, a small head, or sprout, being formed at each leaf joint. Seed should be sown thinly in drills July to November, and when the plants are 6 inches in height they should be transplanted to rich soil, setting them in rows 3 to 4 feet apart and the plants 18 inches to 2 feet apart in the row. Packet, 5 cents; ounce, 20 cents; $\frac{1}{4}$ pound, 50 cents; pound, \$1.50.



Grennell's Rust-Proof Wax.

Wardwell's Kidney Wax

Valentine Wax

and other varieties of wax beans listed in our spring catalogue are sold out and no more can be furnished until next December.

Broccoli.

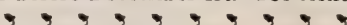
This vegetable is closely allied to the cauliflower from which it is supposed to have come. Its culture is the same as for cauliflower, and in the Southern States is a much surer header. There are many deterred from growing cauliflower from the high price of the seed. To these we recommend a trial of Brocoli. There are two varieties that do well in the South, the only difference being in the color of the heads.

White Cape—Packet, 10 cents; $\frac{1}{2}$ ounce, 15 cents; ounce, 25 cents; $\frac{1}{4}$ pound, 75 cents.

Purple Cape—Packet, 10 cents; $\frac{1}{2}$ ounce, 20 cents; ounce, 30 cents; $\frac{1}{4}$ pound, \$1.

The
Southern
Ruralist

The Best Farm Paper Published,

Ought to be in your home this year. It will be doubled in size September 1st. We give one year's subscription free as a premium on every order for seeds to the amount of \$1.00 or over before December 1st. See next to last page of cover. 

Hastings' French Grown Beet Seed.

Extremely careful tests have shown us that the best beet seed in the world for planting in the South comes from a certain grower in France. This seed, which is specially grown for us in France, and imported by us direct, germinates better, produces smoother and tenderer roots than beet seed from any other grower. It's as near perfection as we have ever seen. Our well-known policy of getting everything of the very best leads us to place all our growing contracts for beet seed with this French grower. While it costs us a little more than we can buy seed from elsewhere, yet the rapid increase in our sales fully repays us for this extra cost. If you want to grow the best in beets, plant our French grown seed.

Culture Sow in rich or well-manured ground after same has been deeply plowed or spaded. Sow in rows 18 inches to 2 feet apart. Sow thinly in the rows in this latitude from early spring up to August 15th, and later further South. In Florida, sow from September to December. The seed is rough and soil should be firmed or rolled after planting. When 2 or 3 inches high thin out to 5 or 6 inches apart in the row. The young plants are superior to turnips and spinach for greens. In light, sandy soil cover seed 2 inches; in stiff or clay soils, not over 1 inch.

Hastings' Improved Blood Turnip Beet.



Hastings' Improved Blood Turnip Beet.

Lentz' Extra Early Beet.

This variety is becoming very popular with many of our market gardeners, both for shipment and near-by market, many of them preferring it to Eclipse. It is certainly a splendid variety. Nearly as early as the Egyptian, but larger and of extra fine quality. Color a dark blood red, tender and sweet at all stages of growth. Has small top and with favorable seasons can be used in six weeks from sowing. Very productive, a splendid keeper and shipper. Gardeners, either for home use or market, will make no mistake in planting Lentz, if they want a first quality, extra early beet. Packet, 5 cents; ounce, 10 cents; $\frac{1}{4}$ pound, 20 cents; pound, 55 cents, postpaid. 10 pounds, not prepaid, \$4.

Long Smooth Blood Beet.

An old-time favorite in the South. Has long, smooth, blood red roots, going well down into the soil, enabling it to resist drouth and heat. A few of these ought to be in every garden for late use after other varieties are gone. Flesh very tender and sweet. Packet, 5 cents; ounce, 10 cents; $\frac{1}{4}$ pound, 20 cents; pound, 50 cents.

Half Long Blood Beet.

Another favorite for late use. It is intermediate in length between our Improved Blood Turnip Beet and the Long Smooth. In color it is a deep blood red, smooth and free from stringy roots. In quality it is tender and sweet, and remains in good condition for several weeks after maturity. You will be pleased with it. Packet, 5 cents; ounce, 10 cents; $\frac{1}{4}$ pound, 20 cents; pound, 55 cents.

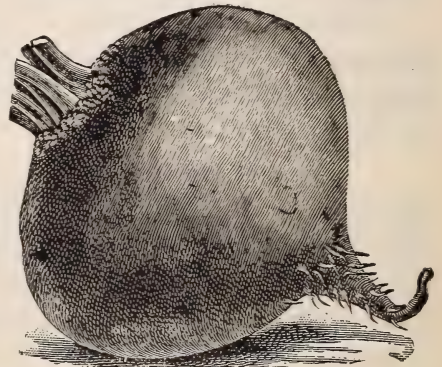
The most popular variety for home use and near-by markets. There are but few of our many thousands of customers who do not plant it and find that it gives perfect satisfaction. It is an improvement by our grower in France over the Early Blood Turnip Beet. Color is a deep, blood red. Of fine, even form, very uniform in growth, medium early and productive. Tender, entirely free from stringiness and very sweet. Good for either home or market use and a most valuable variety for succession sowings. Packet, 5 cents; ounce, 10 cents; $\frac{1}{4}$ pound, 25 cents; pound, 65 cents, postpaid. 10 pounds, not prepaid, \$4.50.

Extra Early Egyptian.

An extra early market gardener's beet. A quick grower, producing smooth, rather flattened turnip-shaped roots. When young the flesh is tender, but soon becomes stringy when old. Packet, 5 cents; ounce, 10 cents; $\frac{1}{4}$ pound, 20 cents; pound, 55 cents, postpaid. 10 pounds, not prepaid, \$4.

Eclipse Blood Turnip Beet.

A most popular market gardener's beet for the South as well as a favorite for home gardens. Of remarkably fine form, smooth and free from stringy roots. Small top and a rapid grower. Color a deep blood red which it retains fully after being cooked. Quality extra fine, sweet and tender. A heavy cropper and its handsome appearance makes it an easy seller when placed on the market. Packet, 5 cents; ounce, 10 cents; $\frac{1}{4}$ pound, 20 cents; pound, 55 cents, postpaid. 10 pounds, not prepaid, \$3.75.



Lentz' Extra Early Beet.

Hastings' Beet Seed

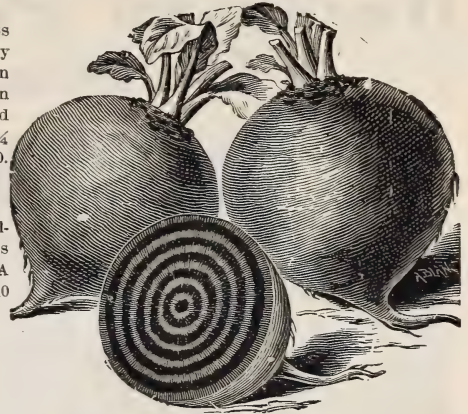
Is grown entirely from carefully selected and transplanted roots by the best seed grower in France. That's why our beet seed produces such smooth, shapely, tender roots. It's the very best you can get.

Hastings' Crimson King.

Another favorite. One of the earliest and sweetest beets for the South. Thousands of our customers plant it every year, and the demand for it is a constantly increasing one. In favorable seasons Crimson King is often ready for table use in six weeks from sowing. Our illustration shows its shape and uniformity perfectly. Packet, 5 cents; ounce, 10 cents; $\frac{1}{4}$ pound, 20 cents; pound, 60 cents; 10 pounds, not prepaid, \$4.50.

Extra Early Bassano.

A very early, almost flat variety of beet of high table quality when young, but soon becomes tough and stringy. It has alternate rings of rose and flesh color, regularly arranged. A good variety for early spring use. Packet, 5 cents; ounce, 10 cents; $\frac{1}{4}$ pound, 15 cents; pound, 50 cents.



Hastings' Crimson King Beet.

Bastian's Extra Early Beet.

An early, large size turnip-shaped beet of the brightest red color, beautifully zoned with rings of lighter color. Profitable for either home or market use, and of the very best quality. Packet, 5 cents; ounce, 10 cents; $\frac{1}{4}$ pound, 20 cents; pound, 50 cents.

Yellow Turnip Beet.

This is almost identical with our Improved Blood Turnip Beet except in color, which is a deep yellow. Slices of this alternated with red beets make a pleasing show on the table. Packet, 5 cents; ounce, 10 cents; $\frac{1}{4}$ pound, 20 cents; pound, 60 cents.

Swiss Chard or Sea Kale.

A beet grown for the leaves only. The mid-rib of the leaf is cooked and served like asparagus. The other portions are cooked and served like spinach. This does not make a good root. Packet, 5 cents; ounce, 10 cents; $\frac{1}{4}$ pound, 20 cents; pound, 50 cents.



Bastian's Extra Early.

Jumbo Mangel and White French Sugar Beet.

For stock feed only. Ounce, 5 cents; $\frac{1}{4}$ pound, 15 cents; pound, 40 cents; postpaid.

Cauliflower.

Culture — Does best in a rich, well-tilled soil; will do in a well-manured soil. Sow in seed bed at same time as cabbage. Transplant when 3 to 4 inches high; give plenty of water in dry weather. Keep wet, hoe thoroughly and often. Heads may be bleached extra white by tying the leaves over the top closely. Should be more generally cultivated in the South than it now is. It is a spring crop in this latitude. In Florida and along the Gulf sow the seed in September, October and November.

Gilt Edge.

Introduced by us to the Southern growers in 1893. This has been thoroughly tested by thousands of customers in the past nine years. It is the largest, most perfect and surest header of any variety ever offered, and in quality it is unexcelled. One specimen sent to our store weighed 7 pounds and 8 ounces without the leaves. It is of the Snowball type, but is much larger and will stand longer without decay than any other. Packet, 20 cents; $\frac{1}{4}$ ounce, 75 cents; $\frac{1}{2}$ ounce, \$1.25; ounce, \$2.25; $\frac{1}{4}$ pound, \$8; pound, \$30.

Extra Early Paris White—Heads medium size. Fine for family garden. Packet, 10 cents; $\frac{1}{4}$ ounce, 30 cents; ounce, 50 cents; $\frac{1}{4}$ pound, \$2; pound, \$7.

Le Normand's (Short Stem)—Packet, 10 cents; $\frac{1}{4}$ ounce, 15 cents; $\frac{1}{2}$ ounce, 25 cents; ounce, 50 cents; $\frac{1}{4}$ pound, \$2; pound, \$7.

Early Snowball (Henderson's)—A good early variety, second only in value to the Gilt Edge. Packet, 15 cents; $\frac{1}{4}$ ounce, 60 cents; $\frac{1}{2}$ ounce, \$1; ounce, \$2; $\frac{1}{4}$ pound, \$7.50; pound, \$28.

Large Late Algiers—Best late variety. Packet, 10 cents; $\frac{1}{4}$ ounce, 25 cents; ounce, 75 cents; $\frac{1}{4}$ pound, \$2.50.

Autumn Giant—Packet, 10 cents; $\frac{1}{2}$ ounce, 30 cents; ounce, 50 cents; $\frac{1}{4}$ pound, \$1.50.

We don't charge you 50c. to \$1.00 per ounce extra for Blue or Red Seals.



Gilt Edge Cauliflower—The Finest Strain Grown.

Hastings' Premier Brand Cabbage Seed.



A single head of "ALL-HEAD EARLY," grown near Atlanta, Ga.
From Hastings' "PREMIER BRAND" Cabbage Seed.

You Can Grow Cabbage Like This.

The word "**Premier**" means "the highest" or "the first." That's why we named our present grade of cabbage seed "**Premier Brand**." It does not apply to one variety alone but to every variety in this catalogue. It is not the name of any one variety but a word standing for the highest possible quality that can be grown, and this same highest quality is found in every variety. We now sell the highest grade of cabbage seed of any seed house in the country.

It took us years to get to the point that we could get this "**Premier Brand**" grown, but we now have it, something of so high a grade that you can't get it of anyone else. It is grown for us exclusively by the best cabbage seed grower in America.

Every head of cabbage from which our "**Premier Brand**" of seed is grown is carefully selected. **Every head that is not absolutely true in shape, size and solidity is thrown out and destroyed.** Every head that does not come up to the standard of the most exacting cabbage seed grower in the country is rejected. In this way every ounce of seed produced is what is known as "stock seed" among the seed growers. Every variety of cabbage seed in this catalogue is grown under those conditions. No matter what variety you buy from us you get the very best seed. No seedman North, South, East or West has it. It's grown for H. G. Hastings & Co., of Atlanta, exclusively. It costs us from 100 to 200% more to grow it than the grades sold by other seedmen, but we believe in getting for our customers the best that can be grown. Nothing is too good for them. We began selling our "**Premier Brand**" cabbage two years ago. Since that time our sales of cabbage seed alone have more than tripled. It's because we furnish the best. "**Premier Brand**" cabbage seed would be cheap at \$10 per pound compared with the grade sold by many other seedmen at from \$1.25 to \$2 per pound and which costs less than one-half as much to grow.

Look at the above picture taken from a photograph. It's as pretty a head of cabbage as can be grown. It did not have special treatment. It is simply a head of cabbage taken from a market gardener's crop grown from Hastings' "**Premier Brand**" seed. If you are a good gardener and will give your crop good, careful cultivation you can have just as good cabbage as this.

How to Grow Cabbage: Our 16 page pamphlet, giving full cultural directions for growing cabbage successfully in the Southern States sent if you ask for it.

Hastings' All-Head Early Cabbage.

A splendid cabbage. Our strain of the "All-Head Early" is the finest in existence for a medium sized, flat, early cabbage. See the picture (on opposite page) reproduced from a photograph of a single head of "All-Head Early" grown by one of the market gardeners near Atlanta. We think you will agree with us that it's a cabbage that's hard to beat. It's an extra early flat head variety. It's a sure header with half a chance; well named "All-Head" as it has few outer leaves. One week earlier than the famous Early Summer. You will be pleased with it. "Premier Brand" seed. Packet, 5 cents; $\frac{1}{2}$ ounce, 15 cents; ounce, 25 cents; $\frac{1}{4}$ pound, 60 cents; pound, \$2.00.

Alpha, Earliest of all Cabbages.

Our new "Alpha" is bound to be a leader. It's an entirely distinct variety, different from any variety or type now sold. We secured a small quantity of it from the originator on Long Island two years ago, and are now able to offer it for the first time. It's an almost flat variety, a week to ten days earlier than the earliest Jersey Wakefield. In leaf and color it is like the Wakefield. In solidity of head it is like the Danish Ball Head. It is always sure to head, and the heads, whether large or small, are always hard, even when not over 3 inches in diameter. They are of dwarf growth, and can be set even closer than Wakefield. In our trial grounds we have heads 8 inches in diameter and not over 7 inches above ground. It's quality is of the finest, and you will make no mistake planting it for an extra early cabbage. We recommend this new cabbage most heartily to you as the best extra early cabbage in existence. You will be pleased with it if you try it. Packet, 10 cents; $\frac{1}{2}$ ounce, 20 cents; ounce, 35 cents; $\frac{1}{4}$ pound, \$1.25; pound, \$4.50.



Hastings' Alpha Cabbage (The Earliest).

Packet, 10 cents; $\frac{1}{2}$ ounce, 20 cents; ounce, 35 cents; $\frac{1}{4}$ pound, \$1.25; pound, \$4.50.

Genuine Surehead.

60 cents; pound, \$2.00.

For description and illustration, see special cabbage page in first part of catalogue. Packet, 5 cents; $\frac{1}{2}$ ounce, 15 cents; ounce, 25 cents; $\frac{1}{4}$ pound, 60 cents; pound, \$2.00.

Hastings' Sure Crop.

cents; $\frac{1}{4}$ pound, 75 cents; pound, \$2.50.

For description and illustration, see special cabbage page in first part of catalogue. Packet, 10 cents; $\frac{1}{2}$ ounce, 15 cents; ounce, 25 cents; $\frac{1}{4}$ pound, 75 cents; pound, \$2.50.

Centennial Flat Dutch.

ounce, 25 cents; $\frac{1}{4}$ pound, 65 cents; pound, \$2.00.

For description and illustration, see special cabbage page in first part of catalogue. Packet, 10 cents; $\frac{1}{2}$ ounce, 15 cents; ounce, 25 cents; $\frac{1}{4}$ pound, 65 cents; pound, \$2.00.

Long Island Wakefield.

ounce, 25 cents; $\frac{1}{4}$ pound, 75 cents; pound, \$2.50.

For description and illustration, see special cabbage page in first part of catalogue. Packet, 10 cents; $\frac{1}{2}$ ounce, 15 cents; ounce, 25 cents; $\frac{1}{4}$ pound, 75 cents; pound, \$2.50.

Florida Drumhead.

$\frac{1}{4}$ pound, 65 cents; pound, \$2.00.

For description and illustration, see special cabbage page in first part of catalogue. Packet, 10 cents; $\frac{1}{2}$ ounce, 15 cents; ounce, 25 cents; $\frac{1}{4}$ pound, 65 cents; pound, \$2.00.

BIG 4 COLLECTION.

Genuine Surehead as an extra, for 25 cents, postpaid.

One packet each of Sure Crop, Long Island Wakefield, Centennial Flat Dutch and Florida Drumhead, and one packet of Genuine Surehead as an extra, for 25 cents, postpaid.

Hastings' Surehead a World Beater

"Hastings' Surehead Cabbage from Premier Brand seed is a world beater. We shipped a carload of them the other day, and the heads weighed from 5 to 15 pounds. The car averaged a little over 9 pounds per head. How is that for high? That is the largest average ever shipped out of Texas, if not out of the South.

March 19, 1903.

"Jos. SCOTT.
"Leesville, Gonzales Co., Texas."



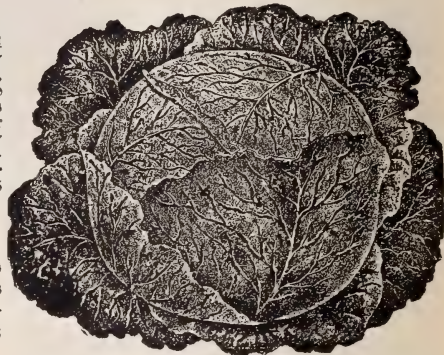
Stein's Early Flat Dutch.

Hastings' Emerald King.

A superb early cabbage of our own introduction. It has had several years thorough test in all parts of the South and is now a recognized standard variety among our customers. An early, flat, very solid variety that can be grown for either early or late crop. Of fair size, heads averaging from 5 to 8 pounds; grows very uniformly; is a sure header, and does not burn or blister easily in the hottest and driest weather. An unexcelled variety to withstand droughts. It is of a dark, glossy green color, holding up its color long after other sorts wilt and fade. **Premier Brand Seed.** Packet, 10 cents; $\frac{1}{2}$ ounce, 15 cents; ounce, 25 cents; $\frac{1}{4}$ pound, 70 cents; pound, \$2.25, postpaid.

Solid South Cabbage.

A splendid early cabbage, resembling Early Summer, but is slightly earlier, more uniform, has fewer outside leaves and is less liable to split and run to seed. Well adapted both for shipping and for home use. **Premier Brand Seed.** Packet, 5 cents; ounce, 20 cents; $\frac{1}{4}$ pound, 60 cents; pound, \$2.



Emerald King.

BUG DEATH

KILLS CABBAGE LICE.

KILLS THE SMALL CABBAGE WORM.

NOT POISONOUS TO MAN OR BEAST.



Early Summer.

Stein's Early Flat Dutch.

This is a very careful selection from the Early Dwarf Flat Dutch, being somewhat larger, shorter stemmed and a little later than the Early Dwarf. It is known under dozens of names, but is commonly known in the lower South as "Stein's" and "Augusta Trucker." For the market gardener who ships his crop this is valuable. It seems to do especially well in certain parts of Texas, but is not a favorite in Florida. Our illustration gives a good idea of its general appearance. It is firm and solid, shrinks but little in shipping and holds its color well. Packet, 10 cents; $\frac{1}{2}$ ounce, 15 cents; ounce, 25 cents; $\frac{1}{4}$ pound, 70 cents; pound, \$2.50.

"No Culls."

The "**Premier Brand**" cabbage seed received from you were true to type and turned out just as you said they would, and I want none better. One of our largest commission dealers here said my cabbage was the finest he handled; never had to "cull" them.

S. E. MITCHELL.

Corpus Christi, Tex.

Early Summer.

One of the best early flat cabbages, coming in 10 days to 2 weeks later than Jersey Wakefield. Very uniform in size and shape, round, flattened and solid. Has small outer leaves and stands close planting. **Premier Brand Seed.** Packet, 5 cents; $\frac{1}{2}$ ounce, 15 cents; ounce, 25 cents; $\frac{1}{4}$ pound, 60 cents; pound, \$2.

Early Spring.

A French variety. The right name for it is "Early Parisian," but it was imported and re-named "Early Spring" by a prominent New York seedsmen. Its only value is in its earliness, coming in as it does about the same time as the Wakefield. It is small, flat, with short stem, the head almost resting on the ground. Being small it can be set close, about 20 inches apart. Heads firm and rather solid, but is not as good a cabbage as Alpha. Packet, 10 cents; $\frac{1}{2}$ ounce, 20 cents; ounce, 30 cents; $\frac{1}{4}$ pound, 90 cents; pound, \$3.

"Premier Brand" Is Fine.

Your "**Premier Brand**" cabbage seed is fine. My customers all want to know how I can grow such fine cabbage.

J. S. MCKINLEY, Orange, Tex.

DANISH BALL HEAD.

Also known as "Hollander." It is a very handsome and extremely hardy late cabbage, which is growing in popularity in America, having proved one of our very best winter sorts. It is highly prized in Denmark, and grown there almost exclusively for winter cabbage. It thrives well on thin soils and in highly exposed situations. The heads are of good marketable size, not quite so large as Flat Dutch, but very hard, round, fine-grained, and will weigh $\frac{1}{4}$ more than other varieties of equal size.

We recommend it highly as a cabbage for late summer and fall planting for maturing in winter and early spring in southwestern Texas. It does not seem so well adapted to other parts of the South. **Premier Brand Seed.** Packet, 10 cents; $\frac{1}{2}$ ounce, 15 cents; ounce, 25 cents; $\frac{1}{4}$ pound, 65 cents; pound, \$2.25.

All Seasons.

As improved by us during the past few years, is a most valuable cabbage for a succession crop for market gardeners in the South. Heads are large and solid, flattened on top. It is a good, reliable header and resists heat and drouth well. **Premier Brand Seed.** Packet, 5 cents; $\frac{1}{2}$ ounce, 15 cents; ounce, 25 cents; $\frac{1}{4}$ pound, 65 cents; pound, \$2.00.



Danish Ball Head.

EARLY DWARF FLAT DUTCH

An old-time favorite and standard for planting in the South, especially in family gardens. Medium size, round and flattened. Heads usually weigh from 4 to 5 pounds. **Premier Brand Seed.** Packet, 5 cents; ounce, 20 cents; $\frac{1}{4}$ pound, 50 cents; pound, \$1.75.

Early Deep Head.

The heads of this cabbage grow to a large size, and, as its name signifies, are deeper through than ordinary stocks of second early cabbage. It heads up firm, and we find it a valuable variety. **Premier Brand Seed.** Packet, 5 cents; ounce, 25 cents; $\frac{1}{4}$ pound, 60 cents; pound, \$2.

Premier Brand All Right.

Your "Premier Brand" cabbage seed is all right. Although we had the most unfavorable season we have had for years, we made a good crop. I shall order more of this same seed from you this fall.
New Smyrna, Fla. FRED NORDMANN.



Early Dwarf Flat Dutch.

"Succession," a Market Gardener's Cabbage

Succession is largely a market gardener's variety, in many parts of the South, being used almost exclusively for shipment North. It is of rather large size, well flattened on top. In maturity it is almost 10 days later than Early Summer and Early Flat Dutch, but is nearly double the size of those varieties. Is firm and solid, a very sure header and stands shipment to the North, arriving in good condition and color. Succession is a good variety and a favorite in many parts of Florida, Georgia, Louisiana and Texas for late summer and fall planting. We furnish you the highest grade obtainable in seed of this variety, **Premier Brand Seed.** Packet, 5 cents; $\frac{1}{2}$ ounce, 15 cents; ounce, 25 cents; $\frac{1}{4}$ pound, 60 cents; pound, \$2.



Succession Cabbage.

RIGHT PRICES
RIGHT SEEDS
RIGHT CROPS.



Hastings' Selected Jersey Wakefield.

EXTRA EARLY EXPRESS—A small extra early variety, suitable only for home gardens. Very popular in some localities. **Premier Brand Seed.** Packet, 5 cents; $\frac{1}{2}$ ounce, 10 cents; ounce, 15 cents; $\frac{1}{4}$ pound, 40 cents; pound, \$1.50.

LARGE EARLY YORK—Well known loose-headed early sort. Good for early growing in home gardens. Tender and of fine quality. **Premier Brand Seed.** Packet, 5 cents; $\frac{1}{2}$ ounce, 10 cents; ounce, 15 cents; $\frac{1}{4}$ pound, 40 cents; pound, \$1.50.

PERFECTION DRUMHEAD SAVOY—The tenderest and richest variety of all. It does not head so well in hot weather, hence should be planted in July and August for heading in fall and early winter. Almost as hardy as kale. **Premier Brand Seed.** Packet, 5 cents; $\frac{1}{2}$ ounce, 15 cents; ounce, 25 cents; $\frac{1}{4}$ pound, 65 cents; pound, \$2.00.

Hastings' Selected Jersey Wakefield.

Almost every one knows the popular Early Jersey Wakefield Cabbage. Comparatively few know the superiority of our strain of this variety. It's grown with the greatest care and a well cultivated crop shows the greatest regularity of size, shape and solidity. If you are growing the Early Wakefield, you cannot afford to be without our extra select seed. It pays to use it. **Premier Brand Seed.** Packet, 5 cents; $\frac{1}{2}$ ounce, 15 cents; ounce, 25 cents; $\frac{1}{4}$ pound, 65 cents; pound, \$2.25.

American Grown Cabbage Seed Only

The cabbage seed sold by most seedsmen in the United States is European grown. This imported seed can be sold at from \$1.00 to \$1.25 per pound and makes fairly good crops when planted in the Northern States, but nine years out of ten imported cabbage seed will make either a partial or total failure when planted in the South. Why this is so we have not space in this catalogue to give a full explanation.

Fourteen years' tests and observations in the South have fully established the fact that imported cabbage seed is unsafe to plant in this section. It never heads satisfactorily.

Every pound of Cabbage Seed sold by us is AMERICAN GROWN and is especially adapted to our Southern soils, climate and conditions of growth.

That's why our sales of cabbage seed are more than doubling every year.

How To Grow Cabbage

ought to be in the hands of every one who grows cabbage for market in the South. Sixteen pages of "Cabbage Information." It's free if you ask for it.

ought to be in the hands of every one who grows cabbage for market in the South. Sixteen pages of "Cabbage Information." It's free if you ask for it.

Chervil.

An aromatic plant, fine for seasoning or to use with lettuce for a salad. Sow it broadcast in October or November for winter and spring use, and in February or March for summer use. Packet, 5 cents; ounce, 15 cents; pound, \$1.00.

Cress.

Water—Packet, 10 cents; ounce, 40 cents; $\frac{1}{4}$ pound, \$1.25.

Early Winningstadt.

Desirable because of its earliness and extremely solid heads. Small, sharply pointed, extra early and a sure header, even on poor soil. **Premier Brand Seed.** Packet, 5 cents; $\frac{1}{2}$ ounce, 10 cents; ounce, 15 cents; $\frac{1}{4}$ pound, 40 cents; pound, \$1.50.

Charleston Wakefield.

A large type of the Jersey Wakefield, larger, but two weeks later. A good variety for those wanting increased size of head. **Premier Brand Seed.** Packet, 5 cents; $\frac{1}{2}$ ounce, 15 cents; ounce, 25 cents; $\frac{1}{4}$ pound, 80 cents; pound, \$2.75.

Green Glazed.

A loose-headed variety, well adapted to all parts of the South for summer growth, for the reason that it seems less subject to attacks of insects than other kinds. **Premier Brand Seed.** Packet, 5 cents; $\frac{1}{2}$ ounce, 15 cents; ounce, 25 cents; $\frac{1}{4}$ pound, 75 cents; pound, \$2.50.

Blood Red Erfurt.

The best red cabbage for the South. **Premier Brand Seed.** Packet, 5 cents; $\frac{1}{2}$ ounce, 15 cents; ounce, 25 cents; $\frac{1}{4}$ pound, 60 cents; pound, \$2.00.

IMPROVED LARGE LATE DRUMHEAD—An old standard late maturing variety, large, solid, always reliable as a header and of excellent quality. **Premier Brand Seed.** Packet, 5 cents; $\frac{1}{2}$ ounce, 15 cents; ounce, 25 cents; $\frac{1}{4}$ pound, 60 cents; pound, \$2.00.

PREMIUM LATE FLAT DUTCH—A fine strain of large, late Flat Dutch Cabbage, suitable for either spring or summer sowings. A very desirable variety where large size rather than earliness is wanted. **Premier Brand Seed.** Packet, 5 cents; ounce, 20 cents; $\frac{1}{4}$ pound, 50 cents; pound, \$1.75.

BUNCOMBE OR NORTH CAROLINA WINTER—A firm, solid header. A splendid keeper and favorite winter and spring cabbage in North Carolina. Packet, 5 cents; $\frac{1}{2}$ ounce, 15 cents; ounce, 25 cents; $\frac{1}{4}$ pound, 65 cents; pound, \$2.25.

Extra Curled or Improved Pepper Grass—Tastes same as Water Cress. Extra curled. Packet, 5 cents; ounce, 10 cents; $\frac{1}{4}$ pound, 20 cents.

Corn Salad or Fetticus.

Large Green Cabbaging—This is used for salad dressing during winter and spring. We find it does best sown in drills 9 inches apart. Packet, 5 cents; ounce, 10 cents; $\frac{1}{4}$ pound, 25 cents; pound, 75 cents.

BUG DEATH KILLS THE BUGS



destructive and injurious to plants, either vegetable or flower. We have used and sold Bug Death for three years. Never in our experience have we found an insecticide that gives such general satisfaction. There is hardly a bug or worm that it won't either kill or drive away. After three years' test we recommend it without reserve.

It Never Burns the Plants

like Paris Green, Laurel Green or London purple, but, in addition to protecting the plants from the bugs and insects, it furnishes a valuable plant food.

Bug Insurance.

Every farmer and gardener ought to have Bug Insurance. You take out Life, Fire and Accident Insurance. These are important and valuable forms of insurance, but they are no protection to the farm and garden crops that furnish you your living and your income. Is it not as important to insure your crops as well as your house, or barn, or life? Bug Death furnishes you protection against the destruction of your crops by insects. To the farmer and gardener it is the most valuable insurance he can have.

Everyone Can Have Bug Insurance.

A small amount invested in Bug Death will keep your crops clean and free from insects and bugs. There is hardly a bug or insect that you cannot protect yourself from by the use of Bug Death.

Easily Applied and Non-Poisonous

to all forms of animal life except insects. It's perfectly safe to use. No danger to your stock or members of your family. It's unnecessary to use dangerous and poisonous substances when you can accomplish better results with an insecticide that is absolutely harmless to all forms of animal life except bugs and insects.

Saves Millions of Dollars Every Year.

The use of Bug Death on the vegetable crops of the South would save millions of dollars every year. Its use means safety to your beans, cabbage, potatoes, tomatoes, turnips, cucumbers, squash and muskmelons. If you grow any crop that is subject to attacks of insects, you cannot afford to be without a supply of Bug Death on your place. You can insure your crops. You will raise bigger and finer crops and make more money from them than you will without the use of Bug Death.

Don't Wait Until the Bugs

have eaten up half your crop. Use Bug Death as soon as the bugs appear. Use it freely, dusting it on when the plants are wet with rain or dew. If you prefer to spray your plants, it can be mixed with water (1 pound to 5 gallons) and sprayed on in liquid form.

We Are Southern Wholesale Agents

for Bug Death. Your merchant should keep it on sale regularly, and we will supply him if he desires at wholesale prices. Bug Death in three and five pound packages cannot be sent by mail. When ordering seed by freight or express, include a package of Bug Death, as it can be packed and shipped with the seed.

Single pounds, postpaid, 25 cents. When shipped with seed by freight or express, 15c per pound; 3-pound package, *not* prepaid, 30c; 5-pound package, not prepaid, 50c; 12½-pound box, not prepaid, \$1; 100-pound keg, \$7.

To any express office reached by the **Southern Express Co.**, we will ship a 3-pound box, charges prepaid, for 60 cents; a 5-pound box, charges prepaid, 85 cents; a 12½-pound box, charges prepaid, \$1.45.

To any express office on the line of the Wells-Fargo, American or Pacific Express Companies, we will send Bug Death, all charges prepaid, as follows: 3-pound box, charges prepaid, 60 cents; 5-pound box, charges prepaid, 90 cents; 12½-pound box, charges prepaid, \$2.

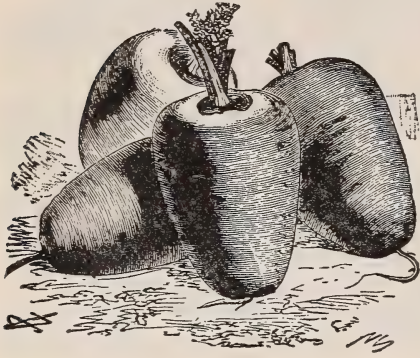
In our opinion it is the safest and most effectual insecticide on the market to-day.

Insure your crops and thus insure your income.

BUG DEATH Kills all the Bugs Quickly.

Hastings' Selected Carrot Seed

Remember—These Prices Include Postage



Oxheart Carrot.

Danver's Intermediate.

Bright orange color, very smooth and finely formed. Produces more weight to the acre than any other half-long variety. Packet, 5 cents; ounce, 10 cents; $\frac{1}{4}$ pound, 25 cents; pound, 70 cents.

New Red Meaux.

Long stump rooted variety. Color, bright reddish orange. Free from hard center or core, being tender throughout. Very heavy cropper. Packet, 5 cents; ounce, 10 cents; $\frac{1}{4}$ pound, 25 cents; pound, 70 cents.

Large White Belgian (For Stock Food Only)—One of the most valuable root crops for stock feeding. The use of carrots in connection with dry feed helps keep the animals in good condition through the winter, and in milk and dairy cattle the flow of milk is largely increased. Sow 4 pounds per acre in drills 3 feet apart, and thin out to 6 inches. Packet, 5 cents; ounce, 10 cents; $\frac{1}{4}$ pound, 15 cents; pound, 45 cents.



Collard.

North Carolina Short Stem—This splendid variety originated in North Carolina, and is immensely popular wherever grown. It has a very short stem, large spreading leaves, very hardy, withstanding drought in summer and cold in winter. Its flavor and cooking qualities are the very best, and it has unquestionably proved itself far superior to any other collard in cultivation. Packet, 5 cents; ounce, 10 cents; $\frac{1}{4}$ pound, 30 cents; pound, \$1.

New White-Head—This fine strain of collards came to our notice 5 years ago. We quote the grower's description: "The collards I raise from seed are from

Oxheart Carrot.

This fine variety is the best of the shortened, thick-formed carrots. Roots are 4 inches wide at top and taper to a 2-inch diameter at bottom. Length from 5 to 6 inches. Roots are very free from hard core and of the finest quality for table use. Both skin and flesh are highly colored. Being very short, they are easily pulled from the ground, where the long sorts often have to be dug in heavy soil. Packet, 5 cents; ounce, 10 cents; $\frac{1}{4}$ pound, 25 cents; pound, 75 cents.

St. Valery.

This we consider the best long variety for late summer and fall planting in Florida and Gulf sections. Roots very smooth and regular in growth, of large size, from 10 to 12 inches in length, and 2 to 3 inches in diameter at the top, tapering gradually throughout. Rich, deep coloring, and free from hard core. A favorite with many of our customers, especially in sections subject to drought. Packet, 5 cents; ounce, 10 cents; $\frac{1}{4}$ pound, 25 cents; pound, 65 cents.

Chantenay.

A splendid quality half-long stump-rooted variety, of deep orange color. Very uniform and productive. Packet, 5 cents; ounce, 10 cents; $\frac{1}{4}$ pound, 25 cents; pound, 75 cents.

Improved Long Orange.

Roots long and of a deep rich orange color. A heavy cropper, so heavy, in fact, that it is profitable to grow for stock feed, although in quality it is a table carrot. Packet, 5 cents; ounce, 10 cents; $\frac{1}{4}$ pound, 20 cents; pound, 65 cents.

Half Long Scarlet.

A favorite with market gardeners and for home use. Bright scarlet color and of fine flavor. Packet, 5 cents; ounce, 10 cents; $\frac{1}{4}$ pound, 20 cents; pound, 65 cents.

COLLARDS.

The collard is an old-time favorite and standby all over the South. There are few gardens in the South that do not contain it. It is well adapted to every Southern State, and is a species of cabbage which is not only very hardy, but a vigorous and continuous grower, producing a mass of leaves, and later in the season, a fairly good head. It is not in its best condition until touched by frost. Seed can be sown in early spring and up to as late as September 1st. When plants are 6 inches high, transplant to open ground, setting them 2 feet apart in the row.

True Southern or Georgia.

This is the old-time favorite variety known to every gardener in the South. It stands all sorts of adverse conditions with little injury, and can be considered a sure cropper. It is very hardy, and will stand uninjured in any ordinary winter as far north as Atlanta. In many places where the soil is too poor to grow cabbage, this old-time variety will furnish an abundance of leaves of good quality. On fairly good soil it makes quite a head when winter comes on. While generally grown for vegetable purposes, it will be found to advantage to grow some so as to give your cow an occasional feed during the winter months as it keeps the digestive organs in good order, and largely increases the flow of milk. Packet, 5 cents; ounce, 10 cents; $\frac{1}{4}$ pound, 25 cents; pound, 75 cents.

a few that produced large white heads 12 years ago in a patch of North Carolina Buncombe Cabbage. Here (Southern Georgia) in a cold, wet winter, most of them form white heads, some soft and some so firm that they are not bursted by the stalks when they start up to form seeds in the spring. Years of careful selection of best head of seeds has greatly improved them; yet they are not always certain to produce heads. When they do not make heads they are much more tender than the old time ones on which the leaves grow far apart." Packet, 5 cents; ounce, 15 cents; $\frac{1}{4}$ pound, 50 cents; pound, \$1.50.

CELERY GROWING IN THE SOUTH.



Savannah Market Celery.

crop, which is matured and marketed in the spring. Do not bank with earth in that section, as it usually produces "rusted" celery, which is unmarketable. **Varieties**—We recommend Mexican Solid for heavy and muck soils; Golden Self-Blanching is a marked success in some sections. White Plume and Giant Pascal do well in Georgia, Alabama and some parts of Florida.

Golden Self-Blanching. Best French-Grown Seed.

A strictly market gardener's variety used almost exclusively by Florida growers for shipment. The source of seed supply of this variety is of the utmost importance, otherwise the crop will be a failure. Our seed is grown for us by the Vilmorins of France and imported by us direct from them—the originators. Crops from this seed leaves nothing to be desired in solidity, color and appearance in market. It is the best Self-Blanching Celery seed produced in the world. Packet, 10 cents; $\frac{1}{2}$ ounce, 20 cents; ounce, 30 cents; $\frac{1}{4}$ pound, \$1; pound, \$3.50.

Savannah Market.

Our finest variety for general planting in the South on the lighter classes of both sandy and clay soils. Strong, vigorous grower, and will make a satisfactory crop where other sorts fail altogether. Large, solid and of first-class flavor. Stalks when well blanched are clear white and centers a light golden yellow. When quickly grown it is crisp and tender, makes a fine appearance in market. Packet, 10 cents; $\frac{1}{2}$ ounce, 15 cents; ounce, 25 cents; $\frac{1}{4}$ pound, 60 cents; pound, \$2.

Mexican Solid Celery.

Stalks rounded, crisp and solid. Its flavor is fully equal to that grown in the famous Kalamazoo (Mich.) celery district, having the rich, nutty flavor so desirable in celery. Packet, 10 cents; $\frac{1}{2}$ ounce, 15 cents; ounce, 25 cents; $\frac{1}{4}$ pound, 60 cents; pound, \$2.

White Plume—Giant Pascal.

Old, well known varieties, preferred by many planters. Packet, 5 cents; ounce, 10 cents; $\frac{1}{4}$ pound, 50 cents; pound, \$1.50.

Celery has become an important market crop in Florida and along the Gulf Coast. There is no reason why it should not be grown in all the Southern States and save to our own section the hundreds of thousands of dollars that go to other sections for our supply every year. It is one of the most profitable crops that can be grown, \$1,500 per acre not being an unusual return for a good crop. At the same time it is a crop that few make a success of the first time. It is one of those crops that "knowing how" cuts a large figure in, and the "know how" can only be gained by actual experience.

Culture Celery requires a moist and fertile soil. If your soil is not rich you must make it so by heavy applications of well-rotted manure or commercial fertilizers. Well-drained muck lands give good results. When the plants are 6 inches high—the latter part of July—they may be set in the trenches 6 inches apart, the trenches being $2\frac{1}{2}$ to 3 feet apart, and as fast as the plants grow keep drawing the earth up, leaving only a small bunch of leaves exposed, thus blanching it as it grows. Celery not well blanched is not salable, neither has it good tender qualities. What are known as green varieties have the best flavor, although it is more trouble to blanch them. They have the rich, nutty flavor which is so desirable in celery.

For Florida and the lower Gulf Coast the seed should be sown in August and September for general



Golden Self-Blanching.

Cucumbers==Summer and Fall Planting.

Seed Crop Failure Leaves But Little Seed

for planting this summer and fall. [We have secured a limited amount of seed of two of the best known standard varieties, and can furnish these varieties in reasonable quantities. The next crop of seed will be ready for delivery about January 1st.

Hastings' White Spine.

The Hastings' White Spine is by far the best of all White Spine strains. The fruit is of large size and immensely productive. The skin is hard and of deep green color, which it holds until fully matured. Is crisp and tender, and retains its fresh, plump appearance long after being gathered. It is nearly one week earlier than any other White Spine variety. Packet, 10 cents; ounce, 20 cents; $\frac{1}{4}$ pound, 60 cents; pound, \$2.00.

Improved Long Green.

The fruits are extra long and of good size, holding the dark green color until well matured. They are crisp, tender and free from bitterness, and are fine for slicing. When 3 or 4 inches long they can be picked and used for pickling purposes with satisfactory results. It is good for planting at all times from early spring up through the summer. Packet, 10 cents; ounce, 20 cents; $\frac{1}{4}$ pound, 60 cents; pound, \$2.00.



Hastings' Improved Large Purple Thornless Eggplant.

Hastings' Improved Large Purple Thornless Eggplant

Eggplant matured in Florida during late fall and winter, is one of the most profitable vegetable crops. For maturing October to December, seed should be sown in July and August. If the young plants are troubled with the small black fleas, dust thoroughly with "Bug Death."

Our Improved Large Purple Thornless has for years been the standard of purity and quality in the market gardening sections of the South. It has, during the past ten years, been grown by thousands of market gardeners in the South. The seeds are pure and the plants are thornless. There is no plant that we exercise more care in, and none in which better results from constant and continued selection are shown. In a properly cultivated crop streaked or off-color fruit is almost unknown. Plants are large, strong and vigorous, each bearing 5 to 8 large "eggs" of dark, rich, purple color. It is the earliest strain of all the large fruited, and is bound to give entire satisfaction when properly cultivated. The vigor and strength of this variety makes it less subject to the effects of "die back" and blight, which is so disastrous to the crop in some sections. Packet, 10 cents; $\frac{1}{2}$ ounce, 20 cents; ounce, 35 cents; $\frac{1}{4}$ pound, \$1.10; pound, \$4.00.

New York Improved Large Purple—As usually sold, not thornless. Packet, 5 cents; $\frac{1}{2}$ ounce, 15 cents; ounce, 25 cents; $\frac{1}{4}$ pound, 80 cents; pound, \$3.00.

Early Long Purple—Very early. Fruit 6 to 10 inches long. Good quality. Packet, 5 cents; ounce, 25 cents; $\frac{1}{4}$ pound, 75 cents.

Dandelion, Improved Large Leaved—Sow in October and November. Packet, 10 cents; $\frac{1}{2}$ ounce, 30 cents; ounce, 50 cents.

Endive, Early Green Curled—The best variety. Packet, 5 cents; ounce, 15 cents; $\frac{1}{4}$ pound, 40 cents; pound, \$1.25.

Leek, Large Carenten—Sow in October and November in Florida. Packet, 5 cents; ounce, 15 cents; $\frac{1}{4}$ pound, 40 cents; pound, \$1.25.

Kohl-Rabi, Early White Vienna—Cultivate same as for cabbage. Packet, 5 cents; ounce 20 cents; $\frac{1}{4}$ pound, 50 cents; pound, \$1.50.

Kale or Borecole.

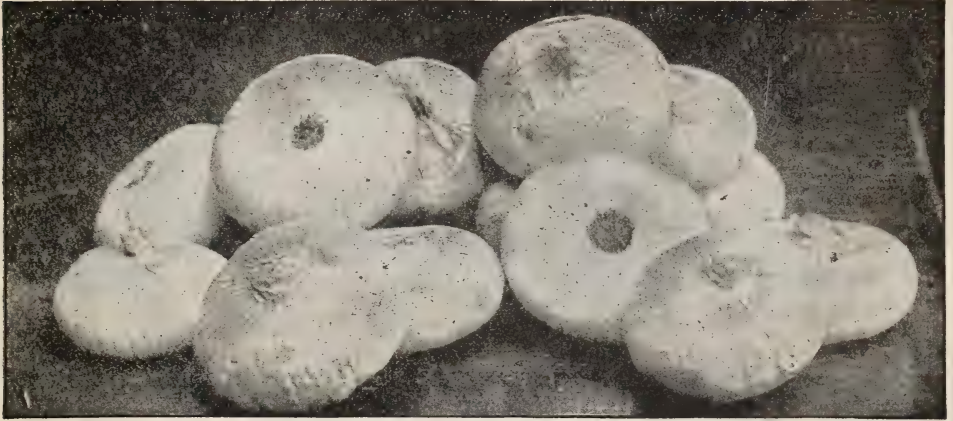
Borecole is more hardy than cabbage and will stand through the entire winter in any ordinary season in the central and lower South. It is much improved in quality by being touched with frost. Of all the cabbage tribe this is the most finely flavored, and it would be more generally grown were its good qualities more widely known. The tall varieties should be sown thinly in drills in August and September, the dwarf sorts one month later. It is a favorite vegetable to furnish "greens" in the South during winter and spring, and for that use there is nothing better.

Early Green Curled—Also variously known as "Dwarf German," "Dwarf Curled Scotch" and "Siberian." This is the variety usually sown in the fall for spring use. It is rather low growing, with fine curly leaves of deep green color. The young leaves are tender and delicate in flavor. Packet, 5 cents; ounce, 10 cents; $\frac{1}{4}$ pound, 25 cents; pound, 70 cents.



Early Green Curled Kale or Borecole.

Hastings' Genuine Bermuda Onions.



BERMUDA ONIONS GROWN IN FLORIDA.

Seed planted October 1st; Matured Onions harvested April 15th.

We are the largest importers of genuine Teneriffe grown Bermuda Onion Seed in the United States. We especially solicit correspondence with large growers of onions, Agricultural Societies, and Market Gardeners' Associations on the subject of Bermuda Onion Culture, and will quote special prices on large quantities.

The Bermuda Onion continues to increase in importance as a Southern vegetable crop, for shipment North, for the nearby markets and for home use. Its importance as a money crop cannot be overestimated. Let a consumer once get a taste of the pure, genuine Bermuda Onion and he will buy no other so long as there is a Bermuda in the market. The Bermuda Onion grower has a sure and steady market for his product. While it is not a fancy price crop, there is always a steady market for onions, North, South, East and West. If the crop cannot be sold at harvest time, it can be held for an indefinite time and marketed when the price suits. It is seldom, however, that the net return to the grower is ever less than 2 cents per pound and it runs to 3 and 3½ cents. It's one of the **safest** crops you can plant. The southern half of Texas, Louisiana, Mississippi, Alabama, Georgia and the entire State of Florida is thoroughly adapted to the successful culture of the Bermuda Onion, and no gardener or farmer in that section should fail to grow them this fall.

POOR ONION SEED IS DEAR AT ANY PRICE.

No crop, with the possible exception of cabbage, depends more on the genuineness and quality of the seed for a successful crop than does the Bermuda Onion. Not one pound in ten of the seed sold in the United States as Bermuda is the genuine article. Almost every pound of it is the spurious California grown Bermuda, an entirely distinct variety and one that is worthless for planting in this section, as no onion equals this California grown for splitting and rotting, even before it is full grown. This fraudulent seed is retailed at prices ranging from \$1.25 to \$2.25 per pound. These prices should be a danger signal to every Bermuda Onion grower who wants to make a successful crop.

For the last twelve years we have sold more genuine, imported Bermuda Onion seed to the growers of the South than all other firms. We have been and are recognized as headquarters for the genuine seed in the United States and for years we have exported seed to all the West India Islands, Mexico and several of the Central American States. Our sales of it almost double every year. The demand for the seed is a constantly increasing one and our supply last year, even with our largely increased growing and importing arrangements, was far below the demand. We had to return money sent us for many hundred pounds of the seed. Two months before this catalogue is issued we have orders booked for twelve hundred pounds for delivery next October. This is a large item with us and our business in Bermuda Onions has been based on the genuineness of the seed and the satisfaction it has given our customers. Prof. Rolfs, formerly with the South Carolina and Florida Experiment stations, in his valuable book on "Vegetable Growing in the South," says relative to the Bermuda Onion: "There is probably no other crop where so much depends on obtaining a good strain of seed." Our years' of experience have shown us how useless it is to attempt to raise Bermuda Onions from the fraudulent and spurious "Bermuda Seed" offered each year by so many seedsmen.

SPECIAL BERMUDA ONION CULTURE.

Our special pamphlet on Bermuda Onions contains the experience and methods of the most successful Texas and Florida growers. It's invaluable to everyone interested in onions as a market crop. Copy free if you ask for it.

Growing Onions from Seed.



The Difference Between Onions Grown from Good Seed

And those grown from the cheap grades is well brought out by the illustration above. It tells the whole story better than words can. The good onions were grown from good seed on which was bestowed every care which the best seed growers can and do. The others were grown from seed from those whose inducement to buy is the lowest price. Is the lowest price the cheapest, even if the grower paid ten times as much for the good seed as he did for the other. The picture tells the whole story. The difference between the two is the difference between a first-class, profitable crop and a failure.

There is one all important requisite to a successful crop of onions in the South and that is the right variety of onion and seed of the best quality of that variety. Without these, fertile soil, heavy fertilizing and the best of cultivation avail little or nothing. That is why we have tried to impress on our customers everywhere the necessity for getting the very best strains of seed of the Bermuda Onion for fall planting and how to avoid getting caught with the spurious California grown seed. You can buy onion seed cheaper than ours. We can buy "cheap" onion seed by the ton and sell it to you at \$1.00 per pound and make a larger percentage of profit than our genuine Bermuda at \$3.00. If we sold you this cheap seed once you would be sure of a crop failure and your dealings with us would end. Our customers appreciate our efforts to give them the best. Our sales of high-grade onion seed have increased enormously in the last three years. Although we are the largest importers of Bermuda Onion seed in this country we were unable to fill orders for one thousand pounds of seed last fall, and were left without a pound of seed to sow for sets. It took us a good many years to convince buyers that our high-grade onion seed was the cheapest. Most of them, after trials of various quality, have come to us in recent years for their seed. They are through experimenting. One of our Texas customers wrote us: "My poor neighbor who bought seven pounds of alleged 'Bermuda' seed from _____ (giving the name of a prominent Philadelphia seedsman) is badly in the soup. The crop is absolutely nothing but scallions. It's his own fault, for he should have known better than to buy cheap Bermuda seed."

We have the right seed that will give you satisfactory results. We don't offer cheap Bermuda seed. We won't have it in our house at any price.

Culture

Bermuda Onion seed of the new crop arrives in Atlanta some time between September 15th and October 1st. Booked orders are filled immediately on arrival and our customers are usually able to plant by October 1st, which is as early as the air and soil are cool enough for successful germination of the seed. For best results all onion seed (fall planting) should be planted between October 1st and December 1st.

Soil for onion crop cannot be worked down too fine. For onions, especially where the soil has a tendency to be stiff, should be plowed and re-plowed and then harrowed down until it is finely pulverized. All trash, weeds, roots, stones, etc., should be removed even if hand raking is necessary to accomplish the result. It pays to have your ground in that fine, mellow condition and it will pay to keep it in just that condition while the crop is growing by giving frequent and shallow cultivation with either hand or wheel hoes. Keep down weeds and grass at all times.

Onions require either a naturally rich soil or heavy fertilizing to make good size. If your soil is not fertile make it so with well rotted manure or commercial fertilizers. In many onion growing sections manure in sufficient quantity is unobtainable. If this be your case, commercial fertilizers are necessary. If your soil is sandy, or sandy loam, use fertilizer containing 6% Available Phosphoric Acid, 8 to 9% Potash, 5 to 6% Nitrogen. If your soil is stiff, heavy or a red clay, use one containing 8% Available Phosphoric Acid, 5% Potash, and 5% Nitrogen. If you want to make a full crop you should use from 1,000 to 2,000 pounds of high-grade fertilizer per acre. A word of caution however about commercial fertilizers. They should always be put in the ground two or three weeks before the seed is sown. As soon as these fertilizers go in the ground and come in contact with moisture a chemical change begins. While that change is taking place heat is generated which usually continues for some two weeks. If seed comes in contact with the fertilizer while this chemical change is taking place the vitality is "burned out" of the seed and it will not germinate. This is especially true here in the South where cottonseed meal is so largely used as a source of nitrogen in the fertilizers. Thousands of pounds of seed are "burned up" in this way every year and the planter very often cannot understand why he fails to a greater or less extent in getting a stand.

Some planters sow seed thinly in beds, transplanting to open ground when plants are about the size of a small goose quill. This method has several advantages. It saves two open ground weedings; it takes not over 3 pounds of seed per acre; in transplanting the plants can be culled and the same size plants can be set out together insuring even size of the onions and even maturity of the crop.

The most general method is to sow seed thinly in the open ground where plants are to stand using 4 to 5 pounds of seed per acre. This is sown in rows 16 inches apart. In sandy or light loam soil seed should be covered 1 inch and firmed or rolled lightly. In stiff clay soils cover not more than $\frac{1}{2}$ inch and do not roll or firm the soil unless it is very finely worked and quite dry. The best time to sow is just before a rain. As soon as plants are well up thin out to six inches apart in the row. The young plants pulled up can be used to fill in missing places or to cover more ground. Fall planted onions can be grown with much less labor than those planted in spring, as the grass and weeds make less growth during the winter and early spring. In Florida and the Gulf coast section from Georgia to Texas, the Bermuda and Creole can be grown through the winter without protection. In the central part of those States we advise partial protection by the use of a heavy mulch of grass, leaves or coarse manure from December 15th to March 15th. The tops will often freeze down to the mulch but will come out again without material injury.

TIME FOR DELIVERY OF BERMUDA ONION SEED

Will be some time between September 15th and October 1st. Exact date can not be given, as there is variation in time of delivery in different years. All orders are booked in regular order as they come in, and are filled as soon as the new crop seed arrives. Our bookings are heavier at this date than last year, with prospects of a short seed crop. Our advice is to place your order at once, so that you will not be disappointed in your supply.

White Bermuda Onion This is the standard variety for market crops for shipping. While it is known as "White Bermuda," the name is misleading, as it is really a light straw color or pale yellow. We make this explanation, as many who grow it for the first time expect to find a pure white onion. Our illustration on page 17 is taken from a photograph of the White Bermudas grown in Florida, less than six months elapsing from the time of sowing the seed to the full maturity and shipment of the crop. The weight of this group, after being cured, was 8 pounds and 5 ounces. If you are a market gardener and growing for shipment to Northern markets, this is the variety you want. Large packet, 10 cents; $\frac{1}{2}$ ounce, 15 cents; ounce, 25 cents; $\frac{1}{4}$ pound, 85 cents; pound, \$3.00; postpaid; 10 pounds, \$27.50.

Red Bermuda Onion Our genuine Bermuda Red is a favorite for home use and home markets in many parts of the South. It is identical in size, shape and mildness with our White Bermuda. The color is a pale waxy red, is THE variety in all sections where a red onion is preferred. In Florida, this variety is grown more extensively than the white for home use and nearby markets. Large packet, 10 cents; $\frac{1}{2}$ ounce, 15 cents; ounce, 25 cents; $\frac{1}{4}$ pound, 85 cents; pound, \$2.75; 10 pounds, \$25.00.

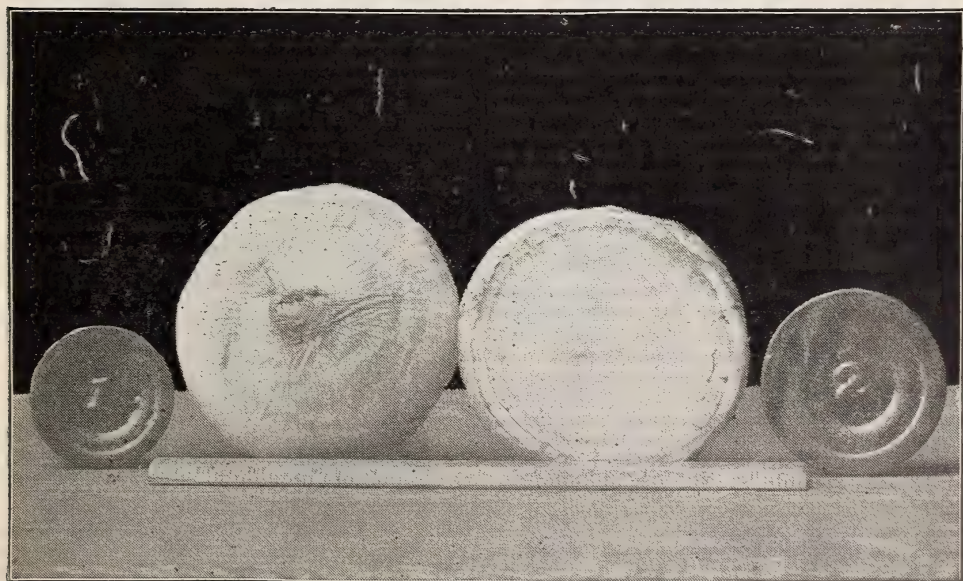
Crystal Wax Onion Supply of this variety is still so limited that we cannot catalogue it. We may have a small quantity of it to sell, but sales of it will be a matter of of special correspondence.

Big Money in Bermuda Onions

In Florida Mr. C. H. Voorhees, Marion County, Florida, writes us June 1st: "We had over 1000 bushels of onions (Bermuda) and they are all gone. I wish we had another thousand. They sell like hot cakes. Netted me \$1.70 per bushel. Shall probably use 40 pounds of seed next fall."

In Texas Mr. Nye, of Texas, in one season sold 134,810 pounds of Bermuda Onions; the following season 238,100 pounds, bringing in to him actual cash to the amount of over \$8,000.00 in two seasons. He has used Hastings' Bermuda Onion seed for 9 years and his order is now booked for his supply for next fall's planting.

Louisiana Creole Onion A flat, light red variety, grown extensively in Louisiana, Mississippi and other parts of the South. Very firm and solid, a splendid keeper. Good, heavy cropper but strong flavored. We do not recommend it to those who want a mild onion. From 6 weeks to 2 months later in maturity than the Bermuda. Delivery of new crop seed (Louisiana grown) about September 1st. Packet, 10 cents; ounce, 20 cents; $\frac{1}{4}$ pound, 65 cents; pound, \$2.25. Special prices on large quantities.



TWO BERMUDA ONIONS
Grown at Abbeville, Ga. Total weight, 3 pounds.

Honest Measured Bushels of Onion Sets.



White Multiplier Onion Sets.

We wish it distinctly understood that we sell onion sets by measure and not by weight. A measured bushel of sets in the fall weighs anywhere from 35 to 40 pounds, usually about 38 pounds. If you buy the 32 pound bushel sold by almost every other seedsman and merchant you lose nearly one-fourth the quantity.

White Multiplier Onion Sets.

They are of pure silvery white color, **enormously productive**, frequently producing as many as **twenty bulbs in a single cluster** from a single bulb planted. Excellent quality and size for bunching green or can be ripened for use as pickling onions, and for this latter purpose can be grown much more economically than from seed. **Their keeping qualities are remarkable**, but their most important quality is **extreme earliness**, being ready for market from **three to four weeks ahead of other onion sets**. They cannot be beaten for earliness; they are matured before the weeds and grasses can cover them. The largest of the sets allowed to grow through summer make an onion of fair size which divides when ripening in the fall, multiplying liberally for another season. Our illustration is made accurately from nature. Pint, 15 cents; quart, 30 cents; peck, 85 cents; bushel, \$3.

Prices Fluctuate. Write for Close Prices on Bushel Lots.

Extra Early Red Sets—The common red onion set as usually sold by dealers. Pint, 15 cents; quart, 25 cents, postpaid; peck, 75 cents; bushel, about \$2.75. Write for close bushel prices.

Yellow Danvers Sets—Our stock of yellow is superior to most of the yellow sets sold, forming much better bulbs. Pint, 15 cents; quart, 25 cents, postpaid; peck, 75 cents; bushel, about \$2.75. Write for close bushel prices.

Silver Skin Sets—The sets grown from the seed of the White Portugal or Silver Skin Onion. Onions are larger and milder than the red. Pint, 15 cents; quart, 30 cents, postpaid; peck, \$1; bushel, about \$3.50. Write for close bushel prices.

Garlic—The pure Italian Garlic, with its strong, pungent flavor and odor. Much used in soups in many parts of the South. $\frac{1}{2}$ pound, 20 cents; pound, 35 cents; postpaid.

OKRA.

Okra can be planted in the central South up to August 1st and into September in Florida. Okra seed is in very limited supply at present but we can supply.

White Velvet—A standard variety throughout the South for home use and local markets. We have a specially fine early strain of this variety, with medium size round, smooth pods, free from ridges and not prickly to the touch. This strain of White Velvet we find to be the best of all the white varieties. Packet, 5 cents; ounce, 10 cents; $\frac{1}{4}$ pound, 20 cents; pound, 60 cents; postpaid.

Perkins' Long Podded.

This variety is used by the Florida shippers almost exclusively to grow for market. Its productiveness is simply wonderful, the pods shooting out from the bottom of the stalk within three inches of the ground, and the whole plant is covered with them to the height of a man's head, five to six feet. The pods are an intense green in color, of unusual length, nine to ten inches, very slim and do not get hard, as is the case with other okras. Packet, 5 cents; ounce, 10 cents; $\frac{1}{4}$ pound, 20 cents; pound, 60 cents; postpaid; 10 pounds, not pre-paid, \$4.50.

Parsley.

Extra Moss Curled.
The most ornamental of all varieties. The favorite sort for garnishing and to supply hotels and markets, and planted almost exclusively by Atlanta gardeners for that purpose. Packet, 5 cents; ounce, 10 cents; $\frac{1}{4}$ pound, 20 cents; pound, 65 cents.

Double Curled—Plants of dwarf, compact growth, and the young leaves have the edges heavily crimped, giving it the general appearance of coarse moss. Often used by market gardeners. Packet, 5 cents; ounce, 10 cents; $\frac{1}{4}$ pound, 20 cents; pound, 60 cents.

Plain Leaved—Is very hardy, a strong grower, and excellent for seasoning, for which purpose it is grown almost exclusively. Packet, 5 cents; ounce, 10 cents; $\frac{1}{4}$ pound, 20 cents; pound, 50 cents.



Moss Curled Parsley.

Parsnip.

Improved Hollow Crown—The best all-round variety of parsnips for the South. The leaves start from a small depression in the crown, giving it the name. Rich, sweet flavor and very productive. Packet, 5 cents; ounce, 10 cents; $\frac{1}{4}$ pound, 20 cents; pound, 50 cents.

Seed Potatoes

At the time this catalogue has to go into the hands of the printer, we have a large quantity of seed potatoes, Bliss' Red Triumph, in cold storage. We are making sales of potatoes almost daily and we do not know whether we will have any left for July, August and September plantings. If interested in seed potatoes for summer and fall planting, write us.

GARDEN OR ENGLISH PEAS FOR FALL PLANTING.

Prices Include Postage Prepaid by Packets, Pints and Quarts.

When peas or beans are ordered in quantity larger than quarts, they will be sent by freight or express, as directed, at purchaser's expense.

Culture—For fall planting in central South, peas should be sown early in September, of such varieties as Home Delight and Bliss' Everbearing. Extra early varieties, such as John L., can be sown the latter part of the month and matured before frost. In Florida and along the Gulf they may be sown during any of the fall months, October and November being preferable. Sow in drills 2 or 3 inches deep. Let them be planted in double rows about 6 to 8 inches apart, and when vines get large enough, run together. Most varieties are of stiff enough growth to support each other, and the planter is relieved of the troublesome work of sticking or brushing them. Peas are not grown in the South as much as they should be, and we believe that our friends make a mistake in neglecting this crop. Any of the extra early kinds and Bliss' Everbearing and Home Delight can be grown in double rows without sticking.

John L. Extra Early.

The best and earliest of all extra early peas, either for market or home use. For eleven years John L. has led all other extra early peas in the South. No pea ever introduced has ever combined such earliness and productiveness as does this variety. It is now the standard among Southern market gardeners. In several tests it has beaten varieties like Landreth's Extra Early into market seven days. For a quick or early crop of peas you will make no mistake in planting John L. Packet, 10 cents; ½ pint, 15 cents; pint, 25 cents; quart, 40 cents; postpaid. Not prepaid, peck, \$1.50; bushel, \$5.75.

Alaska Extra Early.

This follows John L. in earliness and has the best eating qualities of any of the early varieties. Seeds of a bluish shade and well rounded out; the fresh peas being almost equal to the wrinkled varieties in flavor. Stock of this variety is very scarce. Packet, 10 cents; ½ pint, 15 cents; pint, 25 cents; quart, 40 cents; peck, \$1.60; bushel, \$6.00.



John L. Peas.

Bliss' Everbearing.

Height of vine, 18 inches to 2 feet. Pods 3 to 4 inches long, each pod containing six to eight wrinkled peas. Size of peas very large, frequently half an inch in diameter; quality very fine. Its habit of growth is of peculiar branching character, forming as many as ten stalks from a single root stalk. The individual branches are of extraordinary strength and substance, so that when hilled up properly they stand up well without brushing. For continuance of bearing this variety is notable—a characteristic which gives it especial value for late summer and autumn use. After repeated pickings the vines continue to be covered with blossoms and buds, developing to maturity in turn. The quality is the best of any pea known, a variety that should be in every garden. Packet, 10 cents; ½ pint, 15 cents; pint, 25 cents; quart, 40 cents; peck, \$1.40; bushel, \$5.00.

Premium Gem.

A dwarf wrinkled, extra early, growing about 15 inches high, and is one of the earliest for home gardens. While not as heavy a bearer as some of the others, its quality is unsurpassed. Packet, 10 cents; ½ pint, 15 cents; pint, 25 cents; quart, 45 cents; postpaid; peck, \$1.50; bushel, \$5.50.

Philadelphia Extra Early.

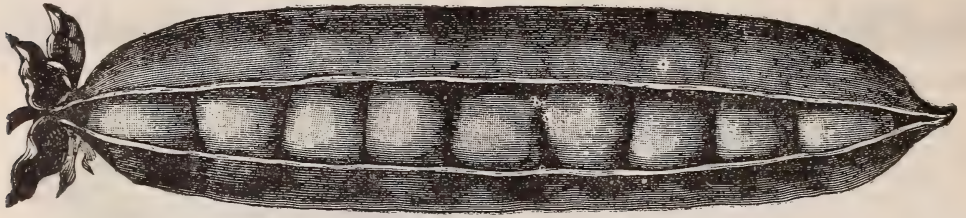
An old favorite, largely grown in the South. A desirable market garden variety. Packet, 10 cents; ½ pint, 15 cents; pint, 25 cents; quart, 40 cents; peck, \$1.50; bushel, \$5.50.

First of All.

Almost identical with the Philadelphia Extra Early. Planted by some market gardeners. Packet, 10 cents; ½ pint, 15 cents; pint, 25 cents; quart, 40 cents; peck, \$1.50; bushel, \$5.50.



Bliss' Everbearing Peas.



Hastings' Mammoth Podded Pea.

This new pea is the mammoth of the pea family in size of pod in addition to being a heavy bearer of peas of the most delicious flavor. It grows, when staked or brushed, from 3 to 4 feet high, but can be grown in double rows like Bliss' Everbearing if desired, although the yield will not be as heavy as when brushed up. Foliage, pod and vine are of rich, dark green color, showing vigor and rapid, healthy growth. Our illustration shows the exact size of the average pods, both in length and breadth. The pods are closely crowded with large peas of very fine flavor. In maturity this comes in about the same time as Telephone, making it a splendid variety to follow such varieties as Everbearing and Home Delight. Its heavy cropping qualities and delicious flavor will make it a favorite wherever planted. Packet, 10 cents; $\frac{1}{2}$ pint, 20 cents; pint, 30 cents; quart, 50 cents; postpaid. Per peck, not prepaid, \$2.00; bushel, \$7.50.



Hastings' Home Delight.

Sweet Peppers.

These mature in three to four months from seed, and are a valuable shipping crop for late fall and early winter in the extreme lower South and Florida. The Large Bell or Bull Nose and Ruby King are almost exclusively grown for this purpose.

Large Bell or Bull Nose—A large, sweet, mild pepper used for salads and for stuffing. A profitable crop to ship after the crops of it further north have been killed by early frosts. Packet, 5 cents; ounce, 20 cents; $\frac{1}{4}$ pound, 50 cents; pound, \$1.75.

Ruby King—A little larger than the Bell, but seemingly better for spring planting in the South rather than for fall crops. Packet, 5 cents; $\frac{1}{2}$ ounce, 15 cents; ounce, 25 cents; $\frac{1}{4}$ pound, 60 cents; pound, \$2.00.

Hastings' Home Delight.

This splendid variety was first introduced by us in 1889. Since that time it has been constantly improved by selection until now it is by far the best and earliest bearer of all the heavy croppers. For home use and nearby markets it is invaluable. It's a strong, vigorous grower, and one of the heaviest bearers, yet it is of such stiff, stocky growth that it can be grown without brushing when planted in double rows 6 to 8 inches apart and run together. Quality of the very best, being a finely wrinkled variety. Packet, 10 cents; $\frac{1}{2}$ pint, 15 cents; pint, 25 cents; quart, 40 cents; peck, \$1.40; bushel, \$5.00.

Improved Telephone.

One of the finest tall growing wrinkled peas. Grows 5 to 6 feet tall and must be staked or brushed. Immensely productive, each plant bearing 25 to 30 extra large pods, tightly packed with large size peas of a most delicious sugary flavor so desirable in peas. The Improved Telephone is a favorite around Atlanta and is proving well adapted to all parts of the South. Packet, 10 cents; $\frac{1}{2}$ pint, 15 cents; pint, 25 cents; quart, 45 cents; postpaid. Peck, not prepaid, \$1.60; bushel, \$5.75.

Black Eye Marrowfat.

An old-time favorite in the South. Packet, 10 cents; $\frac{1}{2}$ pint, 15 cents; pint, 20 cents; quart, 35 cents; postpaid. Not prepaid, peck, \$1.00; bushel, \$3.75.

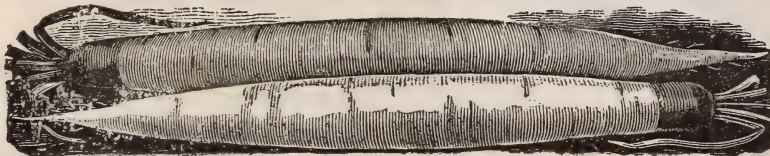
Champion of England.

Another old-time favorite in the South. Large wrinkled variety of finest flavor. Packet, 10 cents; $\frac{1}{2}$ pint, 15 cents; pint, 25 cents; quart, 40 cents; peck, \$1.25; bushel \$4.50.

Salsify or Vegetable Oyster.

Sow in Florida and along the Gulf Coast in September and October. Salsify is a deep rooter, and soil should have been spaded or plowed deeply previous to planting. Sow seed thinly in rows 16 inches apart. When plants are well up thin out to 4 inches apart in the row. Cultivate frequently. Salsify is perfectly hardy. Freezing improves its flavor and quality greatly. Leave standing in the open, and pull as wanted for use during winter and spring. Sow one ounce of seed to each 100 feet of row.

Mammoth Sandwich Island—The best white variety. Attains large size, being twice the size of the Long White. In quality, it is much superior to other sorts. Packet, 10 cents; ounce, 15 cents; $\frac{1}{4}$ pound, 35 cents; pound, \$1.25.



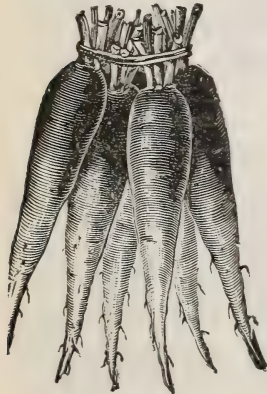
Mammoth White Sandwich Island Salsify.

Hastings' Select Radish Seed.

Culture For best results radishes require a rich, loose, moist soil. The crisp, tender flesh of radish depends almost entirely on rapid growth. Radish planting should begin in September in almost all parts of the South, and continue every ten days to two weeks to insure a succession of crisp, tender radishes for the table. The long varieties are usually the best for first plantings in the fall, followed by the turnip and half-long sorts in October and November. Sow the winter varieties (Spanish and China Winter) in August and September. In Florida and along the Gulf radish can be sown continually through the winter. Sow seed thinly in drills, 1 foot apart, cover seed $\frac{1}{2}$ inch and keep clear of weeds and grass.

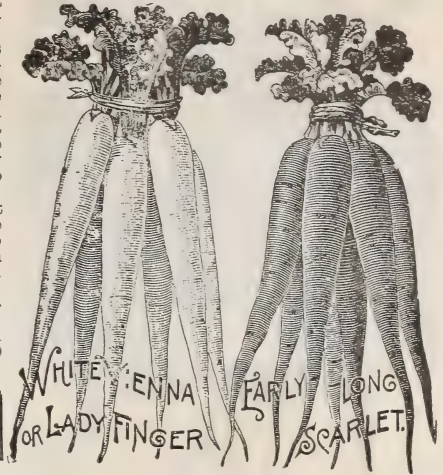
Early Long Scarlet—This is an old favorite, both for market and home garden. Grown by the home gardener and by the market gardener. Root a bright scarlet, long, and tapering to a delicate point. Flesh very crisp and tender, and when grown rapidly is free from all pungent taste. Packet, 5 cents; ounce, 10 cents; $\frac{1}{4}$ pound, 20 cents; pound, 55 cents.

Long White Vienna—Finest long white radish in cultivation. It is almost identical with Long Scarlet, except in color. Beautiful shape, skin and flesh pure white, crisp, tender and of quick growth. Packet, 5 cents; ounce, 10 cents; $\frac{1}{4}$ pound, 20 cents; pound, 60 cents.



New Glass Radish.

OUR PRICES
Include Postage.



Hastings' New Glass—This we consider the finest of the long radishes. We have sold it now for several years, and in has always given satisfaction to those who plant it. It is of pink color, white tipped and regular in size and growth. Flesh transparent white, always crisp, brittle and mild flavor, even when grown to large size. Named glass because of its brittleness and transparent flesh. Very desirable. Packet, 5 cents; ounce, 10 cents; $\frac{1}{4}$ pound, 25 cents; pound, 70 cents.

White Strasburg—Oblong, tapering shape. Skin and flesh are pure white, firm, brittle and tender, retaining its crispness even when the roots are old and large. The best for summer use. An excellent family or market variety. Packet, 5 cents; ounce, 10 cents; $\frac{1}{4}$ pound, 20 cents; pound, 60 cents.

Wood's Early Frame—Similar to the Long Scarlet, but earlier, shorter and broader, more brilliant color, and better for forcing and market. Packet, 5 cents; ounce, 10 cents; $\frac{1}{4}$ pound, 20 cents; pound, 60 cents.

Newcom—Earliest half-long white radish. Their shape and appearance make them ready sellers. Fine eating quality, holding up for several weeks after being ready to pull. They stand extremes of heat and cold. Packet, 5 cents; ounce, 10 cents; $\frac{1}{4}$ pound, 25 cents; pound, 70 cents.

China Rose Winter—Bright rose-colored winter variety, to be sown in summer and fall for winter use. Excellent quality and best winter variety. Packet, 5 cents; ounce, 10 cents; $\frac{1}{4}$ pound, 25 cents; pound, 70 cents.

Chartier—Grows to a large size, but not very uniform shape. Red at the top, pink in the middle, white a tip; handsome appearance when pulled at the right time. Is especially fine flavored when grown quickly in the South. Packet, 5 cents; ounce, 10 cents; $\frac{1}{4}$ pound, 20 cents; pound, 60 cents.

Long White Spanish Winter—Mild in flavor. Packet, 5 cents; ounce, 10 cents; $\frac{1}{4}$ pound, 20 cents; pound, 60 cents.

Long Black Spanish Winter—Black skin, but white flesh. Packet, 5 cents; ounce, 10 cents; $\frac{1}{4}$ pound, 20 cents; pound, 60 cents.

Scarlet Button Radish.

A favorite extra early variety of round form and deep scarlet skin. Very mild in flavor, crisp and tender. Short, narrow leaves, making a very small top. Packet, 5 cents; ounce, 10 cents; $\frac{1}{4}$ pound, 20 cents; pound, 65 cents; post-paid.

Earliest Carmine, Olive-Shaped.

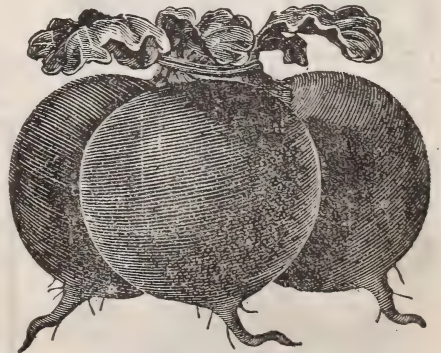
Very handsome, and considered by many as the best of the extra early radishes. Olive-shaped, smooth skin, rich, dark carmine color. In 20 to 22 days the crisp, tender little radishes are ready for use. Top small and of upright growth. Packet, 5 cents; ounce, 10 cents; $\frac{1}{4}$ pound, 20 cents; pound, 65 cents.

French Breakfast.

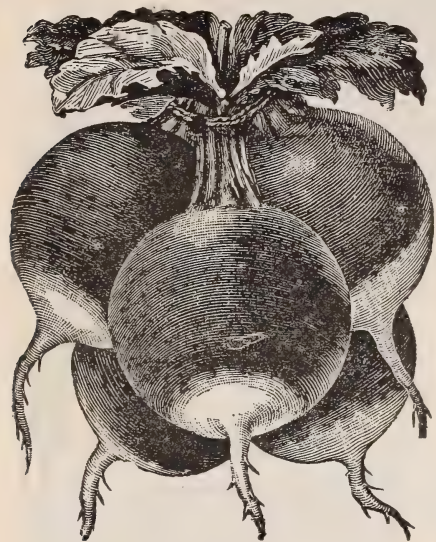
Olive-shaped. Color scarlet, tipped with white. Flesh tender and a quick grower. Packet, 5 cents; ounce, 10 cents; $\frac{1}{4}$ pound, 20 cents; pound, 65 cents.

Philadelphia White Box.

Popular white round variety, similar to Scarlet Button, except in color. Very desirable for close planting in frames or borders. Packet, 5 cents; ounce, 10 cents; $\frac{1}{4}$ pound, 20 cents; pound, 65 cents.



Scarlet Button Radish.



Rosy Gem Radish.

Rosy Gem Radish.

Also known as White Tipped Scarlet Ball. This is the favorite among our market gardeners for forcing as well as for open ground growth. We have seen it ready for market here near Atlanta in 18 days from the time seed was sown. It is also very desirable for home gardens, being almost identical with our Scarlet Button except in the white shading at base of the root. It is one of our earliest varieties. Globe shaped, with rich, deep scarlet top, shading to pure white at the bottom. Very tender and crisp, never becoming hollow or pithy until very old. Packet, 5 cents; ounce, 10 cents; $\frac{1}{4}$ pound, 20 cents; pound, 65 cents.

Hastings' Mixed Radishes.

Our splendid mixture of radishes has become deservedly popular in the past few years, giving, as it does, a succession of radishes all through the season. This mixture contains some of all varieties listed—early, medium and late; round, half-long and long. In one sowing you get a continuous all season's supply in family gardens. Packet, 5 cents; ounce, 10 cents; $\frac{1}{4}$ pound, 25 cents; pound, 75 cents.



Hastings' Mixed Radishes.

American Grown Spinach Seed

The American grown stock of spinach is much superior to imported seed in every particular. The germination is better and stronger, the growth larger and more vigorous and hardier. We have nothing but American grown seed of spinach.



Hastings' Aragon Spinach.

Hastings' Aragon Spinach.

Our new variety for the South. Fine market size, producing a large, thick, green leaf, well crumpled or savoyed, and stands a long time before running to seed. The hardest of all varieties, standing any ordinarily cold winter without damage in this latitude. At the same time it is one of the best heat-resisting sorts for late spring use. This variety has been thoroughly tested, and pleases all market gardeners who use it. Packet, 5 cents; ounce, 10 cents; $\frac{1}{4}$ pound, 15 cents; pound, 40 cents; postpaid; 10 pounds, not prepaid, \$2.50.

Broad Leaved Flanders.

Good standard variety for home use and market. Packet, 3 cents; ounce, 8 cents; $\frac{1}{4}$ pound, 15 cents; pound, 35 cents; 10 pounds, not prepaid, \$2.00.

New Long Standing.

Sow for all seasons. A heavy cropper that does not run to seed readily. Packet, 3 cents; ounce, 8 cents; $\frac{1}{4}$ pound, 15 cents; pound, 35 cents; 10 pounds, not prepaid, \$2.00.

Bloomsdale.

A valuable variety, which is extensively grown, producing large crops of thick-leaved Savoy Spinach. Packet, 3 cents; ounce, 8 cents; $\frac{1}{4}$ pound 15 cents; pound, 35 cents; 10 pounds, not prepaid, \$2.00.

Curled Norfolk Savoy.

Sow for fall and winter use, as it runs to seed if sown in the spring. Is the heaviest cropper. Packet, 3 cents; ounce, 8 cents; $\frac{1}{4}$ pound, 15 cents; pound, 35 cents; 10 pounds, not prepaid, \$2.00.

Market Gardeners' Prices.

The prices in this Catalogue are for seeds in ordinary quantities. For large quantities of seeds such as are used by market gardeners, agricultural or trucking associations, state and county institutions, we can often make lower prices. These are invited to submit to us a list of their wants for special quotations. The largest part of our business consists in supplying the critical market garden trade of the South. Remember that HASTINGS' SEEDS have no superiors. They are the best that can be grown.

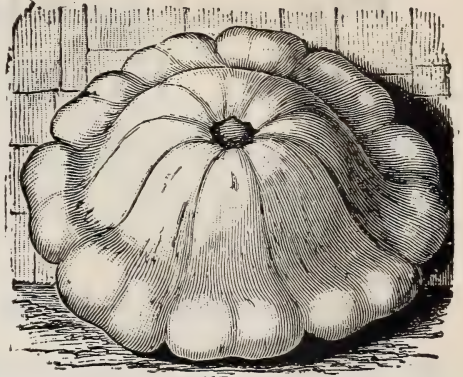
Squashes for Summer and Fall Plantings.

Squash can be planted in Central Georgia as late as August 15th. Further South plantings may be continued until October 1st. In some sections the Marrow varieties are successfully grown planted as late as August 25th.

CULTURE—Sow the seeds in well manured hills in the same manner as cucumbers, the bush varieties three or four feet apart each way, and the running kind six to eight feet. Sow eight to ten seeds in each hill, thin out after they have attained their rough leaves and danger from the squash bug is over, leaving three or four strong plants to each hill. Bug-Death is a sure and effective remedy for the squash bug.

Early White Bush—The well-known White Scalloped or Patty Pan Squash. Earliest, very productive, and of light cream color. Popular for Northern shipment for both fall and spring crops. See illustration. Packet, 5 cents; ounce, 10 cents; $\frac{1}{4}$ pound, 25 cents; pound, 70 cents; postpaid, 10 pounds, not prepaid, \$5.

Mammoth White Bush—This variety is identical with the Early White Bush in shape, color and earliness, but is almost double the size of the old favorite. Has fine smooth skin and color, and grows to be 10 to 12 inches across. Fine for family use and nearby markets, but too large for shipment. Packet, 5 cents; ounce, 10 cents; $\frac{1}{4}$ pound, 25 cents; pound, 75 cents.



White Bush Squash.



Summer Crookneck Squash

Yellow Summer Crookneck—The old, well-known variety of Summer Crookneck, a favorite both for home and market gardens. Fruits small and of a bright orange yellow color and covered with warty excrescences. Flavor is rich and buttery. A favorite for market gardeners and shippers. Packet, 5 cents; ounce, 10 cents; $\frac{1}{4}$ pound, 25 cents; pound, 70 cents; 10 pounds, not prepaid, \$5.

Giant Summer Crookneck—This superb variety has all the good characteristics of the Yellow Crookneck and combines with it almost double the size. These Crookneck varieties are by far the richest and finest flavored of all squashes. Packet, 5 cents; ounce, 10 cents; $\frac{1}{4}$ pound, 30 cents; pound, \$1.

Early Yellow Bush—This is the same in shape and size as the White Bush but has skin of a clear, golden yellow and is somewhat richer in flavor than the white varieties. Very desirable for family use and nearby markets. Packet, 5 cents; ounce, 10 cents; $\frac{1}{4}$ pound, 25 cents; pound, 70 cents.

Golden Custard—A splendid variety of the scalloped squashes. Extra large, with smooth, clear, golden yellow skin and of the finest flavor. Grows in regular bush form and is immensely productive. Packet, 5 cents; ounce, 10 cents; $\frac{1}{4}$ pound, 25 cents; pound, 85 cents.

Early Prolific Marrow
Boston Marrow
Improved Hubbard

} All desirable running or winter squashes. Each, packet, 5 cents; ounce, 10 cents; $\frac{1}{4}$ pound, 25 cts.; pound, 85 cents.

A One Dollar Seed Order

or an order for any amount over One Dollar brings to you for one year a monthly visitor in the shape of the

Southern Ruralist, Free,

the brightest and most practical Southern farm and garden paper, edited and published by a practical Georgia farmer, who eats, sleeps and makes his living on a farm. THE RURALIST will be enlarged to a 16-page paper September 1st. Regular subscription price, 50 cents a year.

20 Cents and a Seed Order

for any amount less than one dollar will also bring THE RURALIST to your home every month for a year. By special arrangement with the publisher we are able to furnish THE RURALIST to those who buy less than a dollar's worth of seeds at less than half price. If you have never seen a copy of THE RURALIST let us send you a sample copy so you can see just how good and practical it is. Sample copy free.

You Need It In Your Business

7,000 Acres of Tomatoes Planted in Florida and Texas In 1902 From Hastings' Seeds.

That tells the story better than pages of talk and testimonials. Those 7,000 acres were planted because former trials by market gardeners have shown that Hastings' Tomato Seed is the very highest grade that is produced. There is nothing untried about Hastings' Tomato Seed. It has stood the test of 14 years' continuous planting by market gardeners in the South, and not a year passes but what we have to enlarge our acreage of tomatoes for seed purposes. Our tomato seed gives the planter entire satisfaction in germination, vigor of growth and full sized, finely colored, smooth fruit, free from cracks and splits.

Hastings' Long Keeper Tomato.



Long Keeper is the best tomato for July, August and September planting in all parts of the South. Its vitality and vigor at the most trying time of year is remarkable. No variety compares with it in ability to withstand heat and drought and blistering Summer sun.

For the market gardener and shipper it is one of the best. It's just the right size to be most saleable and pack well, being 2½ to 3 inches in diameter. It's the right shape and color and its long keeping qualities make it the best shipper on our list. It's a strong, vigorous grower, very early and productive with smooth, even shaped tomatoes almost entirely free from rot and splitting under the most trying conditions of growth. For the home garden it is equally good for a summer and fall variety. It is adapted to the entire South and after several years' thorough tests we can recommend it fully both for market and for home use. Packet, 10 cents; ½ ounce, 15 cents; ounce, 25 cents; ¼ pound, 65 cents; pound, \$2; 10 pounds, \$17.50.

Long Keeper in Texas

"Your Long Keeper Tomato did extra well for me, growing splendidly in spite of long drought."

NEW STONE.

A splendid main crop variety, of large size and bright red color; very smooth. Largely used in some parts of South Florida for late summer and fall planting for winter shipment. It's a good, firm, solid tomato, used in many sections for canning purposes. A splendid variety for late tomatoes in home gardens. Packet, 5 cents; ½ ounce, 15 cents; ounce, 25 cents; ¼ pound, 65 cents; pound, \$2.25.

LIVINGSTON'S FAVORITE.

A standard variety for home or market. Large and perfect shape. Ripens evenly; does not crack easily. A glossy crimson, tinged with purple. Few seeds skin thick and tough. A good variety. Packet, 5 cents; ounce, 20 cents; ¼ pound, 60 cents; pound, \$2.

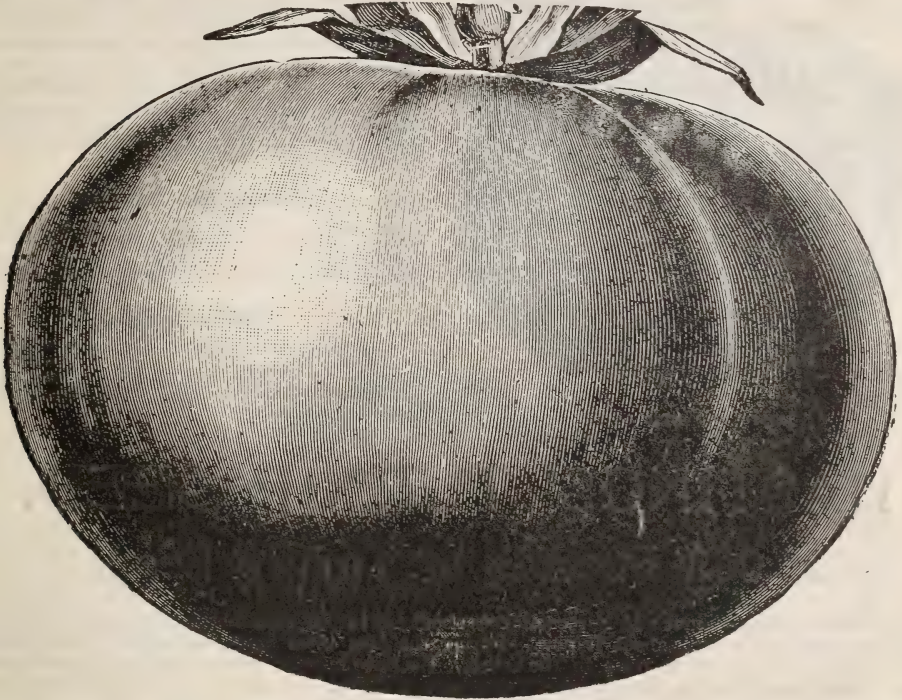
DWARF CHAMPION.

We regret that seasons have been such as to give us but a limited supply of seed of this splendid variety again this year. It is popular everywhere it is known. It is now the only variety of stiff enough growth to be self-supporting without staking, thus keeping the fruit off the ground. The growth is very stiff, upright and compact. Fruit of medium size, smooth and round. It is one of our most desirable varieties. Packet, 10 cents; ½ ounce, 15 cents; ounce, 25 cents; ¼ pound, 65 cents; pound, \$3.

LIVINGSTON'S ROYAL RED.

Introduced by Livingston, who claims it to be superior to all others introduced by him. Packet, 5 cents; ½ ounce, 15 cents; ounce, 25 cents; ¼ pound, 65 cents; pound, \$2.25.

REDFIELD BEAUTY TOMATO



1903 Crop Seed Ready About Sept. 15

The enormous demand last season combined with a short seed crop has exhausted our supply of seed of this superb variety and we have none to offer until the new (1903) crop of seed can be delivered. We cannot buy it in from other seedsmen, because, to the best of our knowledge, there is not a pound of pure, genuine stock of Redfield Beauty in the hands of any seedsman in the United States. If you must plant before September 15th, some other variety must be used; and in this connection let us recommend our splendid variety, Long Keeper, as shown on the opposite page. We are ready to book orders for Redfield Beauty now for delivery or or about September 15th. That is the best we can do for you on the Redfield Beauty this summer and fall.

The most thoroughly satisfactory all-purpose tomato grown. It has stood the test of both market and home gardeners for twelve years, not only in our Southern States, but in foreign countries as well. It's the right size, the right earliness, the right shape, the right color, the right bearing qualities, the right shipping and eating qualities; in fact, it's an all-right tomato in every respect. In every way and in every test it has proven its great superiority to other famous varieties in Florida, Georgia, Mississippi, Louisiana and Texas.

Its vigorous growth, heavy and long bearing qualities, its hardiness, its perfect shaped fruit, and its comparative freedom from rot under the most trying conditions of growth, has made it a favorite wherever planted. It has a glossy crimson color, with a slight tinge of purple. Grows in clusters of three to five fruits. The most regular in growth of fruit of any variety known. Retains its large size until all are picked. Its shape is perfect, and it cannot be excelled for toughness of skin and solidity. Is especially valuable for market gardeners who have to ship long distances or carry in wagons over rough roads. The skin does not break. In competitive tests it has distanced all of the noted varieties put out by the Northern seed houses; not one of them was equal to it. In past years this variety has taken many prizes at fairs and meetings of agricultural societies, and stands today without an equal. This may sound like boasting, but every word of it is borne out by the experience of both private and market gardeners in the past twelve years.

PRICE—Large packet, 10 cents; $\frac{1}{2}$ ounce, 15 cents; ounce, 25 cents; $\frac{1}{2}$ pound, 75 cents; pound, \$2.25; 10 pounds, \$20.00.

Hastings' Seeds Are Successful Seeds



Improved Purple Acme.

Improved Purple Acme.

The old Acme was always a popular tomato, despite its defects. The Improved Purple Acme is a great improvement over the original variety and is a desirable one to plant for either market or home use. Our stock has been grown under conditions that make it expressly valuable for Southern plantings. Our Improved Acme is one of the earliest, is almost round, and has a thin but tough skin. It is very prolific, ripening evenly all over. It has a lovely purplish red color that makes it especially desirable as a market sort. Has few seeds, is juicy and of fine flavor. Packet, 5 cents; ounce, 25 cents; $\frac{1}{2}$ pound, 60 cents; pound, \$2.00.

Buckeye State.

A large variety, from Livingston, nearly one-half larger than Livingston's Beauty; deep color, heavy and of splendid quality. Packet, 5 cents; ounce, 25 cents; $\frac{1}{2}$ pound, 75 cents; pound, \$2.50.

Perfection.

One of the largest early sorts. Color, blood red; skin very fair, smooth. Is one of the first to mature. Solid and of good quality. Ripens evenly and is very productive. Packet, 5 cents; ounce, 20 cents; $\frac{1}{2}$ pound, 60 cents; pound, \$2.00.

HASTINGS' TURNIP SEED.

20,000 Pounds of Turnip Seed.

We have never said much in our catalogues about our turnip seed heretofore, and we think it's about time to say a few words about it now. During the past three years our sales of turnip have grown until they are second to none in the South. We have in stock now a little over 20,000 pounds of turnip seed (more than ten tons) to supply the demand during the next three months, direct from the gardeners in all the Southern States. We will sell this enormous quantity of seed simply because we have turnip seed of the **right quality at right prices**. A combination of these always sells seeds.

Now, turnip, as compared with cabbage, tomato, onion, etc., is a low priced article. Most of the seed houses look on turnip seed as something not worth paying much attention to. They consider it as cheap or low priced stock and not worthy of the care and attention that other things get, and, with that in view, most any old thing is good enough for turnip stock. Now, right there is the difference between Hastings' methods and those of others. It's true that turnip is comparatively low priced; at the same time, we give just as careful attention to these crops that sell for 45 or 50 cents per pound, postpaid, as we do to those selling at \$3.00, \$4.00 and \$5.00 per pound. That's the foundation that our business rests on—just as much care and attention to one kind of seed as another, regardless of what it sells for. **Hastings' Seeds are quality seeds** all through the list.

Now, turnips and rutabagas are important crops in the South, more important than most people realize, and there are tens of thousands of failures every year in these crops through the inferior and adulterated seed sold to gardeners by the country and town merchants throughout the South. It's the cheapest kind of cheap stock in price, but a gardener who wants to make a good crop can better afford to pay \$3.00 or \$4.00 per pound for our strictly high grade stock than to take the other as a gift. Our turnip seed is pure, carefully selected and of the highest vitality. It not only grows, but it grows what you want it to grow, and when it makes a perfectly satisfactory crop, as it always does, it leaves nothing more to be said.

We would call your attention to our special turnip page in first part of this catalogue. Our **Big 7 Turnip Collection** is the biggest bargain in turnip seed you ever had a chance to take advantage of. Full descriptions and illustrations of the seven principal varieties will be found there, true to nature. We make no exaggerations either in pictures or descriptions. Our seeds, turnip as well as everything else, are just what they are represented to be. Our turnip seed growers are the best growers we can find and they are just as careful in growing turnip as our growers of cabbage, tomato, melons, etc. They know that it is their business to produce the best and nothing but the best that can be grown. That's why you can plant Hastings' turnip as well as other seeds with perfect confidence as to the crop

For Summer and Fall Planting.

BIG 7 TURNIP COLLECTION.

One ounce each Improved American Rutabaga, Purple Top Globe, Purple Top Strap Leaf, Early White Flat Dutch, White Egg, Yellow or Amber Globe and Seven Top—seven ounces in all for 25 cents, postpaid. Full descriptions on special turnip page in first part of catalogue.

Improved American Rutabaga. For description and illustration, see special turnip page in first part of catalogue. Ounce, 5 cents; $\frac{1}{4}$ pound, 15 cents; pound, 50 cents; postpaid.

Early White Flat Dutch. For description and illustration, see special turnip page in first part of catalogue. Ounce, 5 cents; $\frac{1}{4}$ pound, 15 cents; pound, 45 cents; postpaid.

Purple or Red Top Globe. For description and illustration, see special turnip page in first part of catalogue. Ounce, 5 cents; $\frac{1}{4}$ pound, 15 cents; pound, 45 cents; postpaid.

Extra Early White Egg. For description and illustration, see special turnip page in first part of catalogue. Ounce, 5 cents; $\frac{1}{4}$ pound, 15 cents; pound, 50 cents; postpaid.

Early Red or Purple Top. For description and illustration, see special turnip page in first part of catalogue. Ounce, 5 cents; $\frac{1}{4}$ pound, 15 cents; pound, 45 cents; postpaid.

Yellow or Amber Globe. For description and illustration, see special turnip page in first part of catalogue. Ounce, 5 cents; $\frac{1}{4}$ pound, 15 cents; pound, 45 cents; postpaid.

Seven Top "Salad Turnip." For description and illustration, see special turnip page in first part of catalogue. Ounce, 5 cents; $\frac{1}{4}$ pound, 15 cents; pound, 40 cents; postpaid.

Breadstone.

This variety was introduced as a turnip and was listed by us as such for several years. We are convinced by several years' test that it is really a rutabaga, although it is as fine grained and sweet flavored as the best varieties of turnips. Of medium size and quick growth, with perfectly smooth roots; white, with light green top. Flesh white, fine grained, and cooks in 15 minutes. For a white, quick growing rutabaga, it is unexcelled. Packet, 5 cents; ounce, 10 cents; $\frac{1}{4}$ pound, 20 cents; pound, 60 cents.

Extra Early Milan.

The earliest of all turnips. A flat, purple top variety, resembling the Early Red or Purple Top very closely, but is two weeks earlier. Perfect in shape and color, sweet and fine grained. Seed supply of this very short. Packet, 5 cents; ounce, 10 cents; $\frac{1}{4}$ pound, 25 cents; pound, 70 cents.

Early Snowball.

Extra early. A variety of sterling merit, perfectly round, early, pure white, very solid, sweet, short top. Ounce, 5 cents; $\frac{1}{4}$ pound, 15 cents; pound, 50 cents.

Pomeranian White Globe.

An extra heavy cropper, desirable where large size and quantity rather than quality is wanted. Very large white globe-shaped variety. Ounce, 5 cents; $\frac{1}{4}$ pound, 15 cents; pound, 45 cents.

Fulton Mammoth.

This is the largest and most productive of all the "salad turnips." It's a splendid combination turnip, giving an abundance of top for greens, at the same time making large, finely developed roots of the best eating quality, these bulbs weighing from 3 to 8 pounds each. This we consider the best of all winter salad turnips. It has been grown near Atlanta for years and has a great local reputation. Packet, 5 cents; ounce, 10 cents; $\frac{1}{4}$ pound, 20 cents; pound, 60 cents.

Hastings' Mixed Turnips. A splendid mixture of our own containing some of each variety of turnips and rutabagas catalogued by us. This mixture is made to supply the demand of the thousands of planters who wish to make only one sowing and at the same time have a succession of turnips to supply them all through the season. This mixture contains all the early, medium and late varieties and "salad" varieties for "greens." Ounce, 5 cents; $\frac{1}{4}$ pound, 15 cents; pound, 50 cents.

Snow White Globe.

Color pure white. shape round, size large, solid, quick in growth for a large turnip, producing a great weight to the acre. Rapidly growing in popular favor, more especially as a late winter and spring variety. In the autumn and early winter it is apt to be hard, but mellows like an apple by keeping. It is productive, hardy and closely resembles in size and shape the popular Purple Top Globe. Ounce, 5 cents; $\frac{1}{4}$ pound, 15 cents; pound, 50 cents.

Golden Ball.

A splendid and distinct yellow variety. Fine grained, medium sized variety, as round as a ball, with a clear, deep orange color. Bulbs of medium size, a rapid grower, maturing early. Has small tap roots. This is the finest flavored of all the yellow varieties for table use. Packet, 5 cents; ounce, 10 cents; $\frac{1}{4}$ pound, 20 cents; pound, 50 cents.

Yellow Aberdeen.

(Purple Top)—A favorite, resisting both heat and cold well. Good size and a splendid keeper. Ounce, 5 cents; $\frac{1}{4}$ pound, 15 cents; pound, 45 cents.

Long White or Cowhorn.

Roots long and carrot-shaped, one-third to one-half of which is formed above ground. It roots deeply, resisting drought well. Flesh pure white, fine grained, sweet and of excellent table quality. It is very hardy and resistant to cold. Ounce, 5 cents; $\frac{1}{4}$ pound, 15 cents; pound, 45 cents.

Southern Prize.

This splendid salad turnip is just beginning to become known through the Central South. It's a great improvement over the Seven Top and seems a little harder than that variety, having successfully withstood freezes that injured Seven Top severely. Like our Fulton Mammoth, it makes good, edible bulbs, although they are not as large or fine grained as that variety. Ounce, 5 cents; $\frac{1}{4}$ pound, 15 cents; pound, 50 cents; postpaid.

HASTINGS' GRASS BOOK

Last fall we published a booklet on Grasses, Clovers and Forage Plants, covering all the principal Grasses and Clovers adapted to Southern planting. We have not the space in this Catalogue to go fully into the importance of Grasses and Clovers, preparation of the soil, causes of failures, etc., but we will be glad to send you a copy free if you are interested in this subject, one that no land-owning farmer can afford to neglect, and this Grass Pamphlet of ours will help you. It tells you how to grow grass; how to make it the most profitable farm crop you can grow.

Quality of Grass and Clover Seeds No class of seeds is more subject to manipulation and adulteration than grass and clover. These, according to the different markets, are graded in from three to five grades, the poorest or lowest quality. We handle in our trade nothing but the very best grade obtainable. This, we know, is higher priced than the lower grades, but it is cheaper, when it comes to the crop, than the lower grades are at half the price. It takes less seed to sow a certain acreage; when it comes up you have got just what you wanted when you planted your crop, you have no adulteration with other seeds, and unless your soil is full of weed seed you will not be troubled with weeds and foreign grasses in your crop. You get all grass or all clover, as the case may be. In some of the clovers there is often a variation of \$3 per bushel between the different grades. As stated, we handle nothing except the highest grade obtainable, pure and free from adulteration. We are always glad to submit samples for comparison with samples from others. We know what our grasses and clover seeds are. They will give you entire satisfaction.

ALFALFA OR LUCERNE.

Each season shows an increased interest in this splendid hay and forage plant. It is the most valuable permanent clover that can be grown in the South, seemingly adapted to all of our States except Peninsular Florida, where its success is doubtful. Once well established it is perpetual, furnishing 3 to 5 cuttings per year. Its nutritive value for feeding is of the highest. Growth remarkably strong, and the roots often penetrate 20 to 30 feet into the subsoil, bringing up plant food that would otherwise never be available. This deep rooting puts the plant forever beyond the reach of drouths after the first season. We know of one field of it in Georgia that is now over 30 years old, fresh, vigorous growth, as rampant as it was the first five years. No farmer with stock or dairyman can afford to be without it. It is well worth the careful attention of the first year to get it established. September and October sowings are the most satisfactory. Sow 15 to 20 pounds to the acre. Full cultural directions given in our "Grass and Clover Talk." **HIGHEST GRADE SEED.** Pound, postpaid, 40 cents; 3 pounds, \$1, postpaid. Write for close market price on peck and bushel lots.

CRIMSON CLOVER.

An annual variety that is proving very popular in the South. The crops of it near Atlanta this year have been magnificent, many of them averaging over 3½ feet in height. Especially valuable for the lighter clay soils. Grown most largely for winter pasture and hay crops, maturing early in May. It's a nitrogen gatherer, and even where the tops are cut off the stubble and roots add largely to the fertility of the soil. It's one of the cheapest and most valuable of the soil improvers, and its growth will undoubtedly pay big on the investment in all the Southern States except Central and Southern Florida. Sow from August to November, taking care to have the ground thoroughly prepared and the highest grade seed. With these, success is practically assured. Pound, postpaid, 25 cents; peck, about \$1.25; bushel, \$4, not prepaid. Write for close market prices.

RED CLOVER.

A valuable farm crop, largely used for pasturage and soil improvement. Yields 2 or 3 cuttings per year. First crop makes rich feed and is the most valuable for hay. Clover draws nitrogen from the air largely, and is one of the best soil renovating crops. Clover, intelligently used, is the farmers' best friend. Should be used as a rotation crop. Sow either in fall or spring. September and March are the best months. Pound by mail, postpaid, 35 cents; 3 pounds, postpaid, 90 cents. Write for close market prices, peck and bushel lots.

WHITE CLOVER.

Does well in almost all lands of the Central South, but prefers moist land. Thrives better than other clover on land containing iron. Sow either in fall or spring, 5 to 6 pounds per acre. 35 cents per pound, postpaid.



Lucerne Clover, or Alfalfa.

CALIFORNIA BURR CLOVER.

Seed should be sown any time from July to October, 50 pounds of "burrs" or 6 pounds cleaned seed per acre. It is an annual plant, furnishing excellent winter grazing, or a hay crop in May. If left to mature, seed forms, drop on the ground, seeding it for the next year's crop. In the meantime summer crops can be grown and matured on the same ground. Our farmers can plant it with perfect safety, as there is nothing of a pest nature to it. Its growth is strong even on the poorest ground. On soil too poor for rye to get high enough to cut, Burr Clover made a growth 2½ to 3 feet high. Burr Clover is a leguminous crop, gathers nitrogen from the air, and, after furnishing winter grazing, leaves the soil in better condition for succeeding crops. **Rough Seed** (in the Burr), 40 cents per pound, postpaid; bushel (10 pounds), \$2.50, subject to market changes. **Cleaned Seed** (Burrs removed), 55 cents per pound, postpaid; 10 pounds, not prepaid, \$3.50.

Hairy, Sand or Winter Vetch.

The Sand Vetch (*Vicia Villosa*) is one of our most valuable forage plants, in fact, the most valuable of all to furnish green forage in winter. It is in general use in this section by dairymen. It's a nutritious feed, fattening, and at the same time largely increases the flow of milk.

R. J. Redding, Director of the Georgia Experiment Station, under date of July 16, 1900, says: "I sowed some little patches of the Hairy Vetch on Bermuda sod and I was astonished and agreeably surprised at the result, and am very much pleased with it; indeed, I find it much more hardy than the common vetch (*Vicia Sativa*), the severe freeze in February killing the common vetch to the ground and not even singeing the Hairy Vetch. On one plot, occupied by a very heavy Bermuda sod, I sowed the seed in October myself at the rate of one bushel per acre and did not attempt to harrow them in or in any way cover them. The result was remarkable. When at its best, I measured a small plot of it accurately and weighed the green forage. The amount was 29,500 pounds per acre."

Vetch should be sown from August to December at the rate of 30 to 40 pounds per acre, with $\frac{3}{4}$ to 1 bushel of rye or winter oats. Vetch is a trailing plant and needs something like rye, oats or wheat to support it, holding it well off the ground and making it easier to harvest and cure. Price, 30 cents per pound, postpaid. In 10 pound lots or more, 15 cents per pound, not prepaid.

Orchard Grass.

One of our most reliable grasses for the Middle South, either for hay or pasture. While succeeding well on almost all soils, it does best on loamy and moderately stiff uplands. It starts growth early in spring and continues to grow well into winter. A quick grower, highly relished by stock, especially when young, and bears close grazing. Makes good hay. Cut for hay when in bloom. Sow in fall or spring, but best results are obtained from fall sowings. Sow 3 bushels per acre. If sown with Red Clover, use $2\frac{1}{2}$ bushels Orchard Grass and 7 pounds Red Clover per acre. Pound, 30 cents, postpaid; bushel (14 pounds), highest grade seed, about \$2.25. Prices fluctuate.

Red Top or Herd's Grass.

Makes excellent pasturage and a fine quality of hay. Succeeds on a greater variety of soils than any other, but does best on heavy or low, moist, stiff soils. Starts to grow later than Orchard, but generally holds up better through the season for grazing in pastures. We handle none but the "Fancy Cleaned Seed," from which all stems, hulls, dirt and trash has been removed. One pound of this is worth a bushel of chaff seed. Price, 30 cents per pound, postpaid; bushel (14 pounds), \$2.00.

Kentucky Blue Grass.

Too well known throughout the South to need description. Our "Elmwood Fancy" Blue Grass is the very best there is to be had. It's pure and clean, free from all weeds and chaff. We make a specialty of Blue Grass for the extensive lawn work here in Atlanta, where everything depends on having pure, vital seed, absolutely free from weeds. Can be sown any time from September to April, but October and November will give best results. Pound, postpaid, 30 cents; 3 pounds, 75 cents; bushel (14 pounds), by express or freight, not prepaid, \$2.00.

Tall Meadow Oat Grass. A valuable hay and pasture grass. Stands heat and cold. Pound, 25 cents, postpaid. Bushel price on application.

Italian Rye Grass. Suited especially to moist bottom lands. Pound, 25 cents, postpaid. Bushel price on application.

Meadow Fescue. Fine pasture grass. Pound, 30 cents, postpaid. Bushel prices on application.

Johnson Grass. A valuable grass if rightly handled. Pound, 25 cents, postpaid. Write for bushel prices.

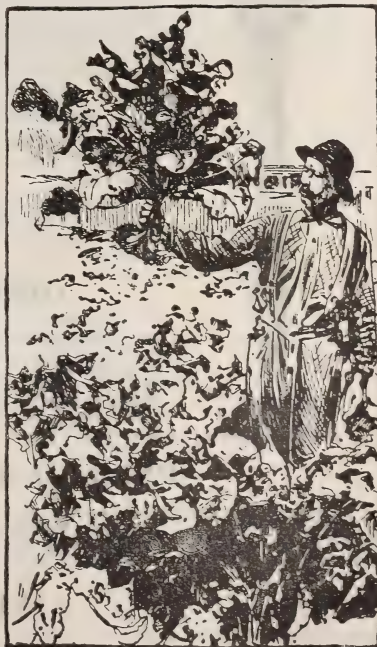
Dwarf Essex Rape.

A splendid fall and winter pasture plant furnishing rich, nutritious pasturage within 6 weeks of time of sowing, and continuing throughout winter and spring. The fattening properties of Rape are said to be very much better than those of clover, and it makes a first-class crop for sowing with Crimson Clover, grazing the crop in the fall and winter, and plowing under the clover or cutting same for green forage or a hay crop the following spring. In this section Rape can be successfully sown from July to November, also early in the spring. Rape is best sown in drills, at the rate of 3 to 5 pounds per acre, or it can be sown broadcast, when from 6 to 8 pounds per acre should be used. Price, 25 cents per pound, postpaid; 10-pound lots and over, not postpaid, 10 cents per pound.



Hairy, Sand or Winter Vetch.

**Grass and Clover
Prices Change
Almost Daily.**



Dwarf Essex Rape

Wheat, Oats, Rye and Barley.



Currell's
Prolific Wheat.

We carry during the fall season complete stocks of suitable varieties of Wheat, Rye, Oats and Barley of first-class seed stock only. At the time this catalogue is issued it is impossible to make prices that will stand through the season on seed grain as they fluctuate in price constantly. The prices given herewith are as near the average prices as we can estimate at this time, and we expect to fill orders at these prices. Should these prices be above the market at the time your order is sent we will refund any difference in the price. We do not attempt to compete in price with the alleged seed grain sold by produce and feed milling houses and gathered up from uncertain sources. Thousands of bushels of low grade milling wheat has been brought into Georgia during the past two years and sold as seed wheat. We are not handling that class of grain. Our seed grain is seed stock grown for that purpose. It is carefully grown and selected for seed purposes, and will give satisfaction to those who plant it. Our prices are fair to you and to us. If you need seed grains in quantity we shall be pleased to make you special prices on application. The largest part of our seed grain is raised on the stiff red clay soils of North Georgia. The superiority of these soils for grain production is well known.

We are now making a specialty of grain seed for fall planting and you will not be disappointed in your crops with seed grain from Hastings.

Currell's Prolific Wheat—This splendid beardless wheat has given entire satisfaction wherever grown in the South, both as regards quality and yield of grain, yields of 30 to 40 bushels being reported as against yields of 20 bushels of other varieties on the same land. Grain medium size, very flinty and a fine milling wheat. Straw very stiff in growth, healthy, strong grower and medium early to ripen. Heads nearly twice the size of the Blue Stem. It is undoubtedly the largest yielding and most satisfactory of all beardless varieties that are adapted to growth in the South. Price, including bags, 40 cents peck; about \$1.35 per bushel. Special prices on large quantities.

Extra Early Blue Stem or Purple Straw Wheat—This is an old favorite among wheat growers in the South. It's a fine productive beardless wheat, a standard in this section. It has always been an early variety, but this past year we have secured an extra early strain of Blue Stem, ripening a week or ten days ahead of the old strain. Price, 40 cents peck; about \$1.25 per bushel. Special prices on larger quantities on application.

Red May—A popular variety in the South, usually ripening latter part of May in this latitude. Very prolific, with flinty grains. Makes a strong milling wheat. Price, 40 cents peck; about \$1.25 per bushel. Special prices on application.

OATS FOR FALL PLANTING.

Winter Grazing or Turf Oats—Are grown largely throughout this section, making splendid crops of oats, heavier and better than the Rust Proof. When sown early so as to have a chance to become well established they are fully as hardy as wheat and make splendid grazing during late fall and early spring without injury to the grain crop to follow. The yield, under favorable conditions, is almost incredible, and their stooling and turfing qualities exceed those of any other variety. On rich soil they have been known to yield over 100 bushels per acre. Much heavier than the ordinary oats. In this latitude, sow in September and October. Price, about 75 cents per bushel. Ask for special prices on large quantities.

Texas Red Rust Proof—A standard variety for either fall or spring sowing all over the South. Better adapted to light and sandy soils than the Turf Oat. Price, about 65 cents per bushel. Special prices on large quantities.

Burt or Ninety-Day Oat—Strictly a spring sown oat in this latitude, but much sown in fall and early winter in Florida and along the Gulf. A fine, clean, bright oat, which matures quickly. Requires a very fertile soil to make paying crops. Price, about 65 cents per bushel.

GEORGIA GROWN WINTER RYE.

Very little of the rye sold as Georgia grown ever sees Georgia until it is offered for sale, most of it coming from the other side of the Ohio river. We obtain our rye direct from the farmers who grow it here in Georgia, and know just what we are getting. No Northern grown rye is sold by us. Rye is used all over the South for winter pasturage, early green feed, and for turning under green. Can be sown successfully from August to March in this latitude. It's a good crop to cover your ground during the winter rains, preventing leaching and washing of hillside lands. Sow 1 to 1½ bushels per acre. Price, 35 cents per peck; about \$1 per bushel. Special prices in large quantities.

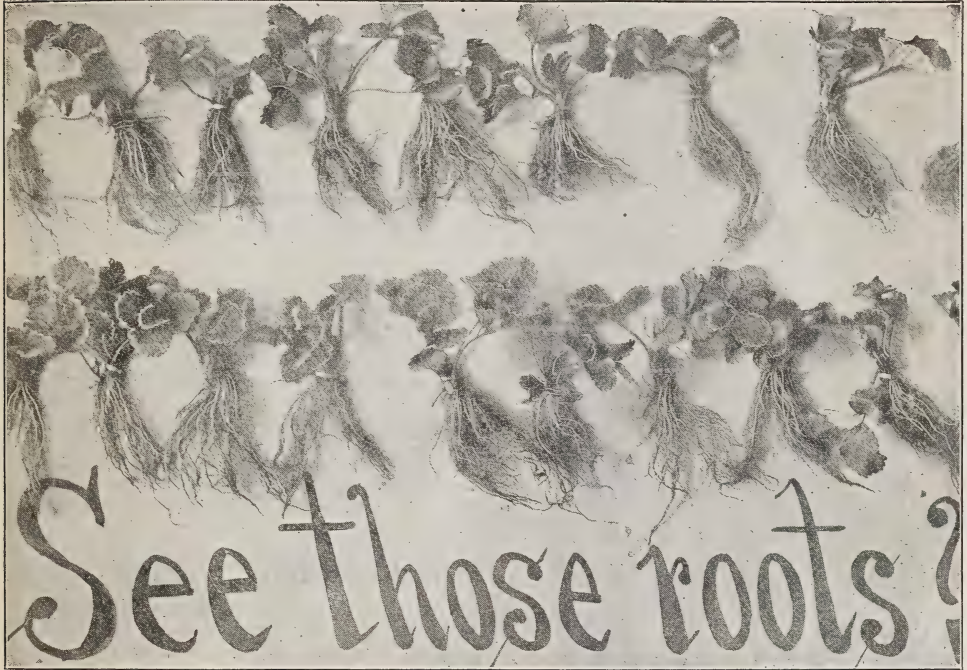
FLORIDA GROWN WINTER RYE.

In many parts of Florida, especially the central and southern parts of the State, the Georgia grown rye is not always satisfactory. We have a few hundred bushels of Florida grown rye for our Florida customers. This will be shipped direct from the growing station in Florida, saving freights. No order for less than one bushel of Florida Rye can be filled. Price, about \$2.25 per bushel.

WINTER BARLEY

Makes a much more leafy growth than either oats, rye or wheat. It makes a strong growth and excellent pasture during winter and early spring, as it can be constantly grazed without injury. A splendid feed for both stock and poultry. Sow at rate of 1½ to 2 bushels per acre during fall and early winter. Price, 40 cents peck; about \$1.10 per bushel.

STRAWBERRIES



A noted preacher once said that he supposed that God might have made a better berry than the strawberry, but He never did. Now, what we want to do is to have some of this "best berry ever made" in every garden in the South. You have the garden and we can supply the plants—not only plants, but good plants of the best varieties for the South.

We reproduce on this page a photograph taken of some of our plants. See the roots which are the most important part. Plants with roots like these can't help but grow and bear with half a chance in your garden. These plants are grown by a strawberry grower who knows his business. These plants are all healthy and no plant is used to propagate from unless it is in a healthy, vigorous condition; nor are any weak offsets allowed to grow; every plant must be healthy and vigorous. Every plant we offer is from the best that can be grown, and you will be pleased with every plant we send you.

We don't believe in having a long list. The following varieties have proven to be the best for the South; the best in size, quality and sureness of bearing.

CLYDE—The earliest good, large berry. Strong grower and productive. Fruit firm, large and of regular form. Bright scarlet berries.

GANDY—Midseason variety. Strong grower, vigorous and very prolific. Ripens evenly. Berries large and finely formed, well colored and firm. Very large and of finest flavor.

CUMBERLAND—Rather late, blooming after most danger from frost is past, yet maturing rapidly; large, finely formed, bright colored berries. The standard variety in this section.

BRANDYWINE—Early. A very large berry; and should be planted on low moist land, as it does not withstand drought well.

LADY THOMPSON—Large, even size; good color, and productive; good shipper, firm and of fine flavor. Strong and vigorous grower. One of the best.

PRICE—All Varieties—Packed and ready for shipment: Per 100, 50 cents; per 1000, \$3.50; not prepaid. Plants can be delivered from October 1st to March 15th.

For the Home Garden--Prepaid Offer

In our opinion, the three best varieties for home use and nearby markets are Clyde, Gandy and Cumberland. 300 plants will make a fine bed, just what you ought to have. We will send, express charges prepaid, to any office reached by the Southern Express Company, 100 of each of these three varieties for \$1.50. To any point reached by any of the other express companies in the Southern States, we will send this strawberry collection, all charges prepaid, for \$1.75.

✂ PLANT A STRAWBERRY BED THIS FALL ✂

Hyacinths, Tulips, Narcissus, Etc.



Dutch Hyacinth.

Narcissus Grandiflora.

The most magnificent, the most popular, the most satisfactory of all the forms of Narcissus. It grows equally well indoors or out, in soil or in water. Also known as the Paper White Narcissus. It ought to be in every home in the South for a winter bloomer. Large size, extra fine bulbs, 5 cents each; 40 cents dozen; \$2.50 per 100; delivered.

Single Tulips.

Artus, bright red; **L'Immaculee**, pure white; **Duchess of Parma**, orange red, bordered with yellow. Each, 3 cents; 25 cents per dozen; \$1.50 per 100; postpaid.

Chrysolora, large, pure, single yellow. 4 cents each; 30 cents dozen; \$2.00 per 100.

Single Mixed Tulips, all shades and colors mixed. 30 cents dozen; \$1.25 per 100.

Double Tulips.

Duke of York, white, with blood red center. 4 cents each; 30 cents dozen; \$2.00 per 100.

La Candeur, pure white; **Gloria Solis**, rich bronze crimson, with yellow edge. 3 cents each; 25 cents dozen; \$1.50 per 100.

We are extensive importers and dealers in Dutch, French and Chinese Bulbs, and our efforts are always toward getting the largest and best bulbs, ones that will give the best results to our customers who plant them. We do not attempt to compete in price with certain firms who make very low prices and then send the buyer the small, immature "Miniature" Hyacinths, worth less than one-half as much as the fully developed bulbs, and never giving satisfaction. We offer you the best there is grown in bulbs at a reasonable price. Narcissus and Roman Hyacinths can be furnished after August 15th, the others after October 1st.

Prices Postpaid.

Remember that the prices given on this page include the payment by us of all postage or express charges. These prices are for the best large sized bulbs delivered at your express or post office.

White Roman Hyacinths.

Splendid bulbs from Southern France, of this delicate and fragrant variety. 5 cents each; 50 cents dozen; \$3.50 per 100, delivered at your postoffice or express office.

Single Dutch Hyacinths.

PURE WHITE
ROSE PINK
LIGHT BLUE
DARK BLUE
YELLOW
DARK RED

First size bulbs only, purchaser's selection of colors. Prices include postage or express charges paid. Each, 8 cents; half dozen, 40 cents; dozen, 75 cents; 100, \$5.50.

Double Dutch Hyacinths.

PURE WHITE
ROSE PINK
DARK RED
LIGHT BLUE
DARK BLUE
YELLOW

First size bulbs only, purchaser's selection of colors. Prices include postage or express charges prepaid. Each, 8 cents; half dozen, 40 cents; dozen, 75 cents; 100, \$5.50.

Chinese Sacred Lilies.

The most interesting of all bulbous plants. Grows vigorously and to perfection in water alone. Finest selected large bulbs, sure to bloom. 15 cents each; 3 for 40 cents; \$1.50 per dozen; postpaid.

Bermuda Easter Lily.

Bulbs 5 to 7 inches in circumference, 12 cents each; \$1.25 per dozen; 7 to 9 inches, 20 cents each; \$2.00 per dozen; 9 to 11 inches, 30 cents each; \$3.00 per dozen.

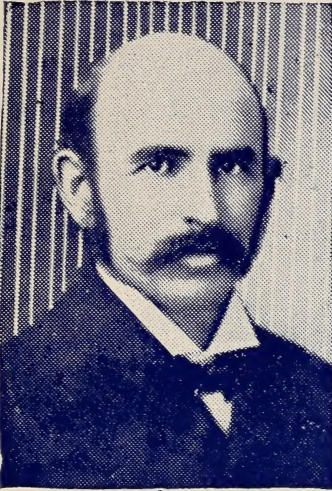
Freesias—Popular bulbs of easiest culture. First size bulbs, 20 cents dozen; \$1.00 per 100.

Mammoth Crocus—White, blue, purple, yellow and striped. 10 cents dozen; 60 cents 100.

White Calla Lily—10 to 20 cents each; \$1.00 to \$2.00 per dozen, according to size.

Lily of the Valley—25 cents dozen, postpaid.

The Southern Ruralist 34



F. J. MERRIAM, EDITOR AND PUBLISHER.

Goes into 32,000 Southern farm homes, an increase of over 12,000 in the last eight months. This is evidence of the increased popularity of **THE RURALIST** under its new management.

THE RURALIST is now under the entire control and management of Mr. F. J. Merriam, a practical Georgia farmer who makes his living on a Georgia farm and has done so for years.

There are tens of thousands of Southern farmers who take no stock in the teachings of many agricultural papers, knowing that the editors have no practical farm knowledge. Another perfectly just criticism that our Southern farmers and gardeners make is that most of the farm papers are published, printed and edited in the Northern States by Northern men, who, while they may be entirely familiar with the farm conditions of the North and entirely capable of advising the farmers of that section, yet they are entirely ignorant of the conditions we work under here in the South, and their writings as published in these Northern agricultural papers are worthless and often misleading to the Southern farmer.

Such criticism cannot be made of **THE RURALIST**. It is a farm and garden paper of and for the South only. It has nothing to do with Northern farm conditions. It's just the paper that every Southern farmer needs in his business, and farming is a business, one of the most complicated lines of business on earth.

There is no theoretical farming in **THE RURALIST**. It deals strictly with the practical in Southern farm life. No untried theories of farm method finds their way into its columns. You don't have to sift out the wheat from the chaff. That is done before the paper is printed. When you get **THE RURALIST** you have the wheat without the chaff.

The Ruralist Experiment Farm

Mr. Merriam's farm of 200 acres is now known as **THE RURALIST** Experiment Farm, the only one of its kind in the South. Every year hundreds of experiments in farm and garden work are carried on at this farm. Some are successes, some are failures. Through these experiments Mr. Merriam is enabled to tell you what to do as well as what to do, based on actual practice under just such conditions as most of you are working under. **THE RURALIST** Farm has the same difficulties to contend with that you have. It has the same conditions of soil and weather, plant diseases and insect pests to deal with as you have. Through the columns of **THE RURALIST** the accounts of these experiments and their results go to you. They are worth to you a hundred times the cost of the paper. Remember that **THE RURALIST** comes to you direct from a practical farmer. Every article on farm and garden topics is written from a practical farm standpoint; for practical farmers and gardeners by a practical farmer who has the same conditions to work under that you have. The experience of Mr. Merriam in dealing with all these farm problems, as published in each issue of **THE RURALIST**, will help you in your work. **THE RURALIST** will give you new ideas every time it comes to you. It is the best medium of information for the farmers, gardeners and fruit growers in the South of the most desirable methods of cultivation of vegetables, either for market or home use; of our regular farm crops; of hay and forage crops; of permanent improvement of our soils; how to fertilize at the lowest possible cost and the best fertilizers to use for the different crops. This information comes to you, not from the desk of a northern city editor, but from an up-to-date Georgia farmer who lives on a Georgia farm, a man who works, eats and sleeps on the farm and knows just as well as you all sides of farm life.

Best Southern Farm Paper

THE RURALIST is the best Southern farm paper published. On September 1st, 1903, the size of **THE RURALIST** will be doubled and the subscription price increased to 50 cents per year. While this doubles the cost to us, still we want **THE RURALIST** as a monthly visitor in the home of every one of our customers. By special arrangement with the publisher we are able to offer one year's subscription free as a premium to every one of our customers sending an order to the amount of \$1.00 or more. To those of you who do not order seeds to the amount of \$1.00 and want **THE RURALIST** we will furnish it for one year if you will remit 20 cents extra with your order for seeds. You get your seeds at regular catalogue prices and **THE RURALIST** at less than one-half the regular price.

Free Premium - On every order to the amount of \$1 or more

Hastings'

Georgia

Grown

Roses

**For Fall
and Winter
Plantings
in the
South**



WE are firm advocates of the planting of large, two-year-old, open ground grown roses in the South during the fall and winter months for full blooming effect the following spring and summer. These roses, of which we grow thousands on our grounds near Battle Hill, are just the size to give you plenty of bloom the next spring. They become dormant usually about October 15th, and can be shipped any time after that date. While the tops remain dormant through the winter, the roots are making constant growth, and when spring opens up, there is a fully developed root system to promote the rapid growth of the top, furnishing bloom immediately. No nursing or petting for a year or two, such as is necessary with small pot-grown plants from the greenhouses.

Lack of space prevents our giving a list of varieties and descriptions in this catalogue. During September we shall issue a special rose catalogue giving descriptions and prices of all varieties grown by us this year. This will be sent free to any one who is interested on request. When you send in your seed order, mention the fact that you are interested in these large, open-ground grown roses, and a copy of this special rose catalogue will be sent you as soon as it is issued. Prices of these two-year-old roses: 25 cents each; \$2.50 per dozen; not prepaid. They are too large to send by mail.

Special Rose Catalogue Ready in
September

Our Special Rose Catalogue, giving descriptions and prices of our open-ground grown
Roses for fall and winter planting. Sent free to anyone on request.